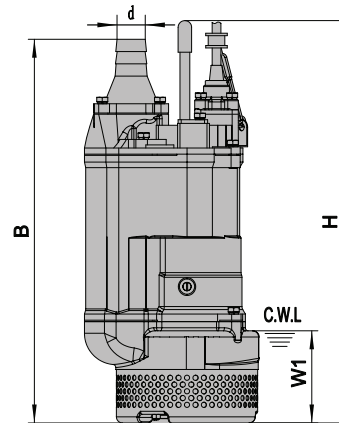
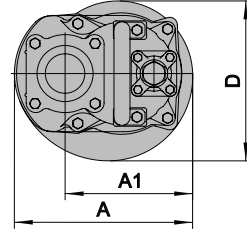
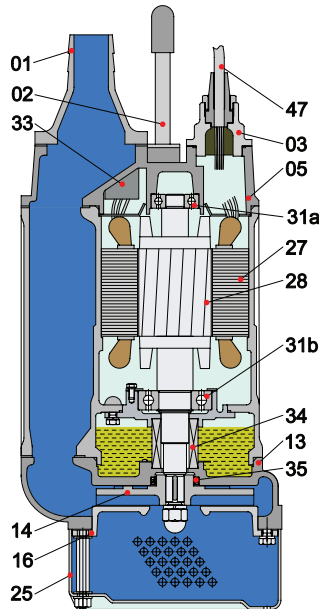


## Dimensions

### SD Series



C.W.L.:Continuous running water level

Item No.	Part Name	Material	Item No.	Part Name	Material
01	Hose coupling	Cast Iron	28	Rotor	Shaft: AISI420SS
02	Handle	Rubber & Steel	31a	Bearing	Ball Bearing
05	Upper cover	Cast Iron	31b	Bearing	Ball Bearing
11	Motor body	Cast Iron	33	Motor Protector	<11KW
13	Pump body	Cast Iron	34	Mechanical Seal	Sic-Sic/Carbon-Sic (≤2.2kW) Sic-Sic/Sic-Sic (≥3.7kW)
14	Impeller	high Chrome Alloy			
16	Inlet Plate	Ductile Iron	35	Oil Seal	
25	Strainer	Steel	47	Cable	
27	Stator				

Model (50/60Hz)	d	A	A1	B	D	H	W1	N.W	G.W	Packing Dimension
	mm	mm	mm	mm	mm	mm	mm	Kg	Kg	mm
SD-50-52-1.5T2-O	50	235	173	545	216	505	120	36	40	620x265x275
SD-80-52-1.5T2-O	80	235	173	545	216	505	120	36	40	620x265x275
SD-50-52-2.2T2-O	50	235	173	545	216	505	120	39	43	620x265x275
SD-80-52-2.2T2-O	80	235	173	545	216	505	120	39	43	620x265x275
SD-50-52-3.7T2-O	50	283	208	628	252	629	150	63	68	710x320x295
SD-80-52-3.7T2-O	80	283	208	628	252	629	150	63	68	710x320x295
SD-100-52-3.7T2-O	100	283	208	628	252	629	150	63	68	710x320x295
SD-80-52-5.5T2-O	80	329	240	671	300	590	150	77	84	750x350x335
SD-100-52-5.5T2-O	100	329	240	671	300	590	150	77	84	750x350x335
SD-100-52-7.5T2-O	100	330	240	764	314	676	190	106	116	835x365x385
SD-150-52-7.5T2-O	150	330	240	790	314	676	190	108	119	865x365x385
SD-100-52-11T2-O	100	373	255	807	350	695	190	136	148	855x415x435
SD-150-52-11T2-O	150	373	255	807	350	695	190	139	150	855x415x435
SD-100-52-15T2-O	100	373	255	842	350	755	190	144	158	905x415x435
SD-150-52-15T2-O	150	373	255	842	350	755	190	146	160	905x415x435

AQUA0000

Exclusively Distributed by