

# Aquaplus

**SS Series  
Submersible Sewerage  
Grinder Pumps**



**Grinder Pumps**

**2 Year  
Warranty!**

[www.aquapluspumps.com.au](http://www.aquapluspumps.com.au)

Aquaplus Grinder Pumps are robust and reliable pumps ideal for sewage applications where liquids are contaminated with long stringy materials such as fabrics, plastics and rubber.

## Features

- Integrated grinding mechanism performing 80,000 shredding actions per minute
- Chromium Molybdenum cutter
- Triplex seal system. Double sided mechanical seals with silicon carbide faces (both top and bottom) running in an oil filled chamber, and the third oil seal isolates the motor from the sewage.
- Dual ball bearing on the bottom of the motor to support the axial push
- Thermal overload protection
- 10m epoxy cable
- Optional TOS Kit available

## Applications

- Domestic sewage system
- Industrial waste system
- Industrial waste water treatment
- Restaurants
- Any other applications requiring the removal of water that may contain filaments, plastic bags, long fibres or rubber materials

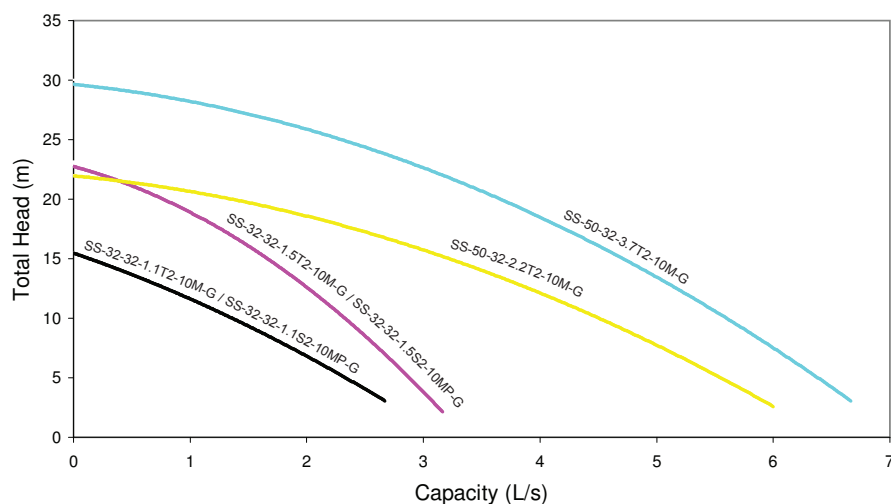


## Specifications

Model	Discharge (mm)	Power (kW)	Voltage (V)	Cable (m)	Max flow (L/s)	Shut-off (m)	Dry weight (kg)
SS-32-32-1.1T2-10M-G	32	1.1	415	10	3.17	16	30
SS-32-32-1.1S2-10MP-G	32	1.1	240	10	3.17	16	31
SS-32-32-1.5T2-10M-G	32	1.5	415	10	3.33	23	34
SS-32-32-1.5S2-10MP-G	32	1.5	240	10	3.33	23	37
SS-50-32-2.2T2-10M-G	50	2.2	415	10	6.33	22	48
SS-50-32-3.7T2-10M-G	50	3.7	415	10	7	30	50

## Performance Curve

SS Series - Grinder Pumps



—	SS-32-32-1.1T2-10M-G/SS-32-32-1.1S2-10MP-G
—	SS-32-32-1.5T2-10M-G/SS-32-32-1.5S2-10MP-G
—	SS-50-32-2.2T2-10M-G
—	SS-50-32-3.7T2-10M-G

**IMPORTANT:** Pump curves are guidelines only. Before making a product selection please contact your local Aquaplus distributor for a detailed pump curve of each model.

**Pump Dimensions**

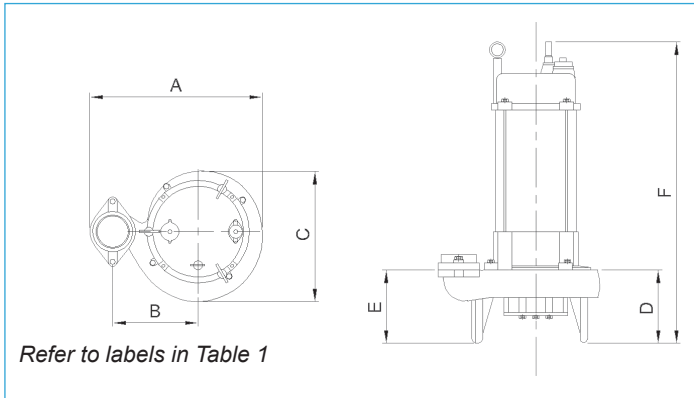


Table 1

Model	A	B	C	D	E	F
SS-32-32-1.1T2-10M-G	284	139	210	108	108	512
SS-32-32-1.1S2-10MP-G	284	139	210	108	108	512
SS-32-32-1.5T2-10M-G	284	139	210	108	108	512
SS-32-32-1.5S2-10MP-G	284	139	210	108	108	512
SS-50-32-2.2T2-10M-G	312	155	234	111	111	513
SS-50-32-3.7T2-10M-G	312	155	234	111	111	573

Freestanding dimensions in mm

**Pump and Optional TOS Kit Dimensions**

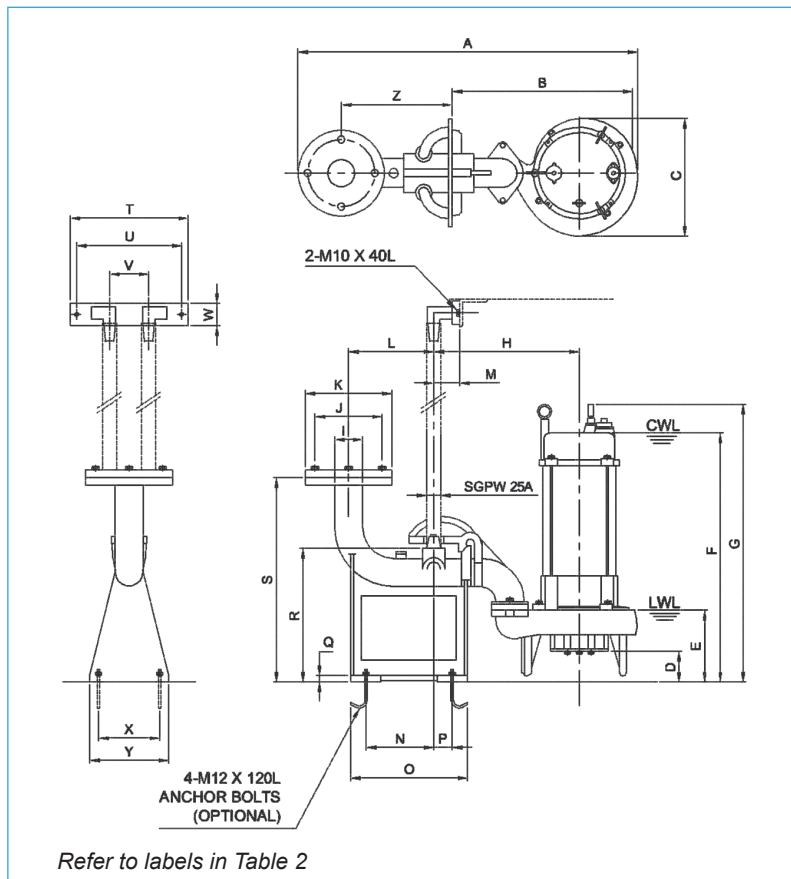


Table 2

Model	A	B	C	D	E	F	G	H	I	J	K	L	M	N	O	P	Q	R	S	T	U	V	W	X	Y	Z
SS-32-32-1.1T2-10M-G	616	340	210	65	138	562	542	281	32	120	155	152	46	121	209	33	12	239	365	211	186	70	40	109	140	196
SS-32-32-1.1S2-10MP-G	616	340	210	65	138	562	582	281	32	120	155	152	46	121	209	33	12	239	365	211	186	70	40	109	140	196
SS-32-32-1.5T2-10M-G	616	340	210	65	138	562	582	281	32	120	155	152	46	121	209	33	12	239	365	211	186	70	40	109	140	196
SS-32-32-1.5S2-10MP-G	616	340	210	65	138	562	582	281	32	120	155	152	46	121	209	33	12	239	365	211	186	70	40	109	140	196
SS-50-32-2.2T2-10M-G	645	369	234	58	138	515	540	297	50	120	155	152	46	121	209	33	12	239	365	211	186	70	40	109	140	196
SS-50-32-3.7T2-10M-G	645	369	234	58	138	566	600	297	50	120	155	152	46	121	209	33	12	239	365	211	186	70	40	109	140	196

TOS dimensions in mm

All content is subject to change without notice.



## Product Range

ESI Series - End Suction ISO Pumps

ESD Series - End Suction DIN Pumps

SD Series - Submersible Dewatering Pumps

SS Series - Submersible Sewerage Pumps

ARJ Series - Aerators (Jet)

ARS Series - Aerators (Submersible)

FRM Series - Flexible Rising Main

MS Series - Mechanical Seals

**Plus more...**



AVAILABLE FROM



**1800 733 687**

[www.mtp.com.au](http://www.mtp.com.au) | [mtp@mtp.com.au](mailto:mtp@mtp.com.au)

For information on these products or for any specialised requirements please contact your local Aquaplus distributor or visit our website at [www.aquapluspumps.com.au](http://www.aquapluspumps.com.au)