

Accessories



More than just pumps

Accessories for

- ▶ drum and container pumps
- ▶ eccentric worm-drive pumps
- ▶ motors



Tailor-made products, intelligent solutions, comprehensive service and certified safety are the characteristic features of the versatile FLUX pump technology. With FLUX, you can rely on more than 60 years of competence highly appreciated all over the world. The special quality of the products and their long life guarantee process and operational reliability and prevent downtime costs.

The FLUX range of products includes:

- ▶ drum pumps
- ▶ eccentric worm-drive pumps
- ▶ centrifugal immersion pumps
- ▶ air-operated diaphragm pumps
- ▶ flow meters
- ▶ mixers
- ▶ complete system solutions
- ▶ extensive range of accessories



We offer an extensive range of accessories to supplement our large variety of drum, container and eccentric worm-drive pumps. We would like to present some of the especially interesting products beforehand.

FLUX offers solutions for the most varied types of industries and their special requirements.

FLUX FOOD pumps

The pumps of the FLUX FOOD series and their accessories meet the latest European safety standards for food contact. They comply with Regulation (EC) No. 1935/2004 and the „Plastics“ Regulation (EU) 10/2011 and are allowed to bear the glass-fork symbol. Moreover, they meet the requirements of the U.S. Food and Drug Administration (FDA).



FLUX hand nozzles



Outlet-side accessories exchangeable
(Various outlet spouts available for different applications)

Low force required
To operate the nozzle due to the ergonomic design of the handle

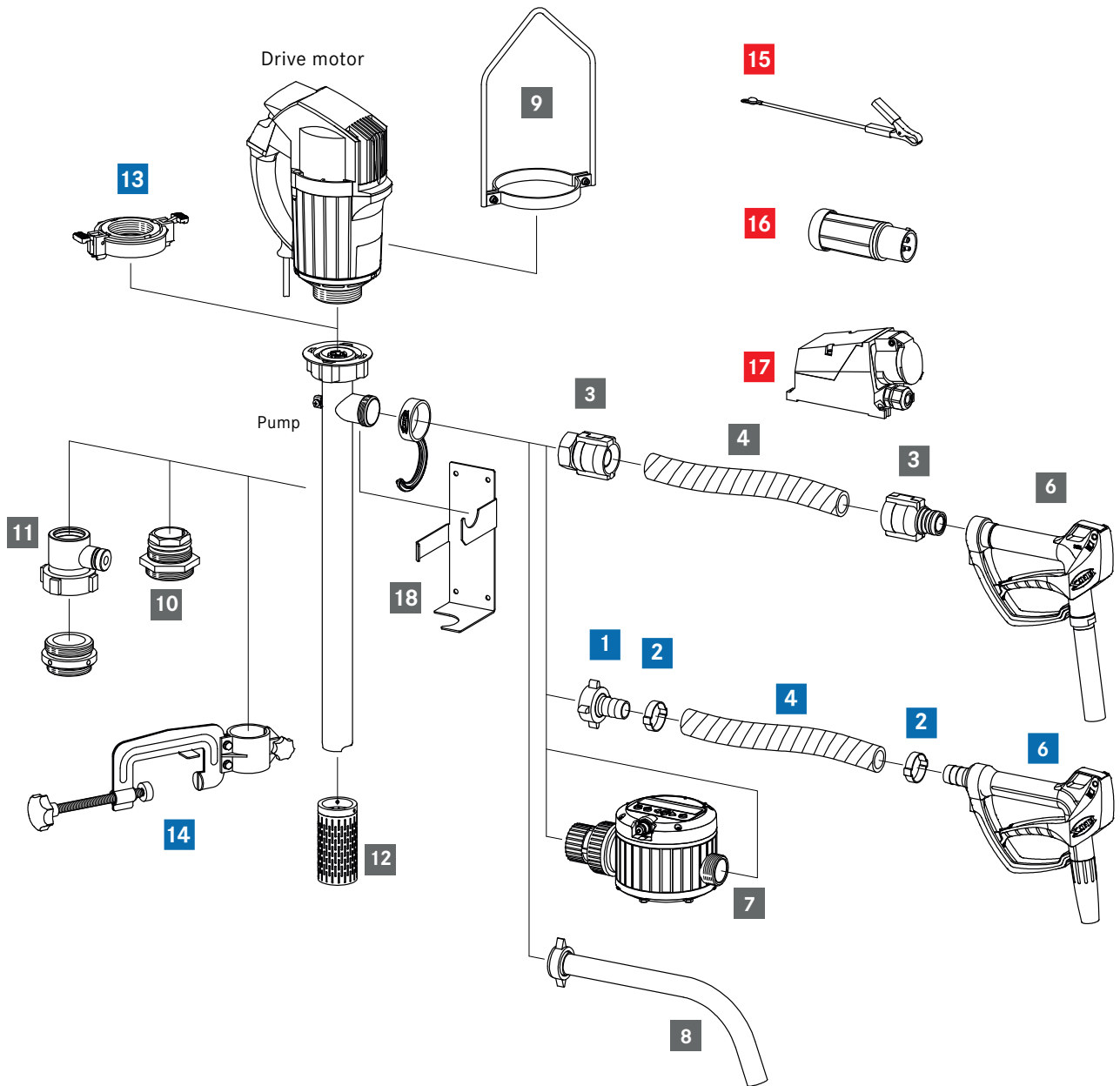
Safe handling
Pivot joint with revolving balls – guarantees absolute tightness even under pressure

Optimised valve ensures

- ▶ Easy operation
- ▶ Precise metering
- ▶ High flow
- ▶ Operational safety due to optimal sealing

Graphical overview of pump accessories

- for use in hazardous areas
- for use in not hazardous areas
- for use in hazardous and not hazardous areas



| | Page | | Page |
|--|--------|---|------|
| 1 Hose connection | 6 | 10 Compression gland | 14 |
| 2 Hose clip | 7 | 11 FLUX fume gland | 15 |
| 3 Swaged hose fitting | 9, 10 | 12 Suction strainer | 16 |
| 4 Hose | 11 | 13 Quick action coupling | 14 |
| 5 Hose kit (3+4 = hose kit) | 8 | 14 Attachment clamp | 17 |
| 6 Hand nozzle | 12, 13 | 15 Earth (ground) wire | 18 |
| 7 Flow meters | | 16 Explosion-proof plug | 19 |
| 8 Discharge spout | 16 | 17 Explosion-proof socket | 19 |
| 9 Carrying handle | 17 | 18 Wall bracket | 17 |

| | |
|--------------------------------------|----------------|
| Hose connections | 6 |
| Hose clips | 7 |
| Hose kits | 8 |
| Swaged hose fittings | 9 – 10 |
| Hoses | 11 |
| Hand nozzles | 12 – 13 |
| Other pump accessories | |
| Drum adapter | 14 |
| Compression gland | |
| Quick action coupling | |
| Mixing tube | |
| Fume gland | 15 |
| Fume cone | |
| Other accessories | |
| Discharge spout | 16 |
| Suction strainer | |
| Inliner suction protection | |
| Flowback stop valve | |
| By-pass valve | |
| Attachment clamp | 17 |
| Container clip | |
| Mounting flange | |
| Wall bracket | |
| Hoist | |
| Carrying handle | |
| Accessories for drive motors | |
| Earth wire | 18 |
| Motor protection switches | |
| Power supply cables | |
| Cekon plug | |
| Explosion-proof plugs | 19 |
| Explosion-proof sockets | |
| Filter-regulator-lubricator unit | |
| Fine filter sound absorber | |
| Exhaust air hose kit for fine filter | |
| Pressure regulator | |
| Accessories for FOOD version | 20 |
| Hose connections | |
| Swaged hose fitting | |
| Discharge spout | |
| Flap valve | |
| Hand nozzle | |

Hose connections

Hose connection consisting of: union nut, hose connector and seal.

Suitable for PVC hoses, petroleum hose and special food-grade hose.

weight metal version: DN 19 ~ 0.02 kg, DN 32 ~ 0.05 kg

weight PP + PVDF version: DN 19 ~ 0,01 kg, DN 32 ~ 0.02 kg

- material: **stainless steel**, with union nut in brass, **nickel-plated** G 1¼ female

| nominal Ø | part no. |
|-----------|---------------|
| DN 19 | 10-959 04 061 |
| DN 25 | 10-959 04 041 |
| DN 32 | 10-959 04 042 |

- material: **stainless steel**, with union nut in **stainless steel** G 1¼ female

| nominal Ø | part no. |
|-----------|---------------|
| DN 19 | 10-959 04 062 |
| DN 25 | 10-959 04 063 |
| DN 32 | 10-959 04 064 |

- material: **aluminium**, with union nut in brass, **nickel plated** G 1¼ female

| nominal Ø | part no. |
|-----------|---------------|
| DN 19 | 10-959 04 050 |
| DN 25 | 10-959 04 039 |
| DN 32 | 10-959 04 040 |

- material: **hastelloy C**, with union nut in **stainless steel** G 1¼ female

| nominal Ø | part no. |
|-----------|---------------|
| DN 25 | 10-959 04 043 |
| DN 32 | 10-959 04 044 |

- material: **polypropylene**, with union nut G 1¼ female

| nominal Ø | part no. |
|-----------|---------------|
| DN 13 | 10-959 04 081 |
| DN 19 | 10-959 04 053 |
| DN 25 | 10-959 04 052 |
| DN 32 | 10-959 04 054 |

- material: **polyvinylidene fluoride**, with union nut G 1¼ female

| nominal Ø | part no. |
|-----------|---------------|
| DN 13 | 10-959 04 082 |
| DN 19 | 10-959 04 101 |
| DN 25 | 10-959 04 102 |
| DN 32 | 10-959 04 103 |



Hose connections for eccentric worm-drive pumps with union nut or clamp connection.

- Material: **stainless steel**

weight: DN 25 ~ 0.03 kg, DN 38 ~ 0.06 kg

| nominal Ø | part no. |
|-------------------|---------------|
| DN 25 Rd 58 x 1/6 | 10-959 04 115 |
| DN 32 Rd 58 x 1/6 | 10-959 04 134 |
| DN 38 Rd 58 x 1/6 | 10-959 04 130 |
| DN 25 G 1½ | 10-959 04 002 |
| DN 32 G 1½ | 10-959 04 003 |
| DN 38 G 1½ | 10-959 04 004 |
| DN 25 Clamp 2" | 10-959 04 136 |
| DN 32 Clamp 2" | 10-959 04 137 |
| DN 38 Clamp 2" | 10-959 04 109 |



1-Ear hose clip

in stainless steel for use with hose connection

- for **PVC hose**

| | outer-Ø | part no. |
|-------|---------|---------------|
| DN 13 | 18 mm | 10-959 13 237 |
| DN 19 | 27 mm | 10-959 13 241 |
| DN 25 | 34 mm | 10-959 13 243 |
| DN 32 | 41 mm | 10-959 13 248 |
| DN 38 | 47 mm | 10-959 13 251 |
| DN 50 | 60 mm | 10-959 13 255 |

- for **petroleum hose**

| | outer-Ø | part no. |
|-------|---------|---------------|
| DN 13 | 21 mm | 10-959 13 239 |
| DN 19 | 27 mm | 10-959 13 241 |
| DN 25 | 34 mm | 10-959 13 243 |
| DN 32 | 43 mm | 10-959 13 249 |
| DN 38 | 51 mm | 10-959 13 252 |

- for **hose for food and chemistry**

| | outer-Ø | part no. |
|-------|---------|---------------|
| DN 13 | 22 mm | 10-959 13 239 |
| DN 19 | 31 mm | 10-959 13 242 |
| DN 25 | 37 mm | 10-959 13 246 |
| DN 32 | 43 mm | 10-959 13 249 |
| DN 38 | 51 mm | 10-959 13 252 |

- for **special hose for food and chemistry**

| | outer-Ø | part no. |
|-------|---------|---------------|
| DN 19 | 31 mm | 10-959 13 242 |
| DN 25 | 37 mm | 10-959 13 246 |
| DN 32 | 44 mm | 10-959 13 249 |

- for **special food-grade hose**

| | outer-Ø | part no. |
|-------|---------|---------------|
| DN 25 | 37 mm | 10-959 13 246 |
| DN 38 | 51 mm | 10-959 13 252 |

Clamp forceps

| | part no. |
|------------------------|---------------|
| to fix 1-Ear hose clip | 10-961 40 811 |



Hose kits

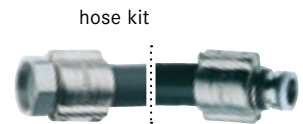
Hose kits suitable for brass hand nozzle

connection Ø 32 mm part no. 10-001 12 340

connection to drum pump G 1 ¼ female, electrically conductive, bracket clamp in aluminium nickel-plated

- **petroleum hose kit**

| nominal-Ø | length | material hose connector | weight | part no. |
|-----------|--------|-------------------------|--------|---------------|
| DN 19 | 2 m | brass | 2.6 kg | 10-001 10 091 |
| | 3 m | brass | 3.5 kg | 10-001 10 092 |
| DN 25 | 2 m | brass | 2.6 kg | 10-001 10 081 |
| | 3 m | brass | 3.5 kg | 10-001 10 082 |



hose kit

- **universal hose kit**

| nominal-Ø | length | material hose connector | weight | part no. |
|-----------|--------|-------------------------|--------|---------------|
| DN 21 | 2 m | brass | 2.1 kg | 10-001 10 839 |
| | 3 m | brass | 3.0 kg | 10-001 10 840 |

suitable for



hand nozzle MS
(see page 13)

- **hose kit for food and chemistry**

| nominal-Ø | length | material hose connector | weight | part no. |
|-----------|--------|-------------------------|--------|---------------|
| DN 19 | 2 m | brass | 2.1 kg | 10-001 10 089 |
| | 3 m | brass | 3.0 kg | 10-001 10 090 |
| DN 25 | 2 m | brass | 2.3 kg | 10-001 10 811 |
| | 3 m | brass | 3.2 kg | 10-001 10 812 |

Hose kits suitable for stainless steel hand nozzle

connection Ø 28 mm part no. 10-001 12 549

connection to drum pump G 1 ¼ female, electrically conductive, bracket clamp in aluminium nickel-plated

- **universal hose kit**

| nominal-Ø | length | material hose connector | weight | part no. |
|-----------|--------|-------------------------|--------|---------------|
| DN 21 | 2 m | stainless steel | 2.6 kg | 10-001 10 870 |
| | 3 m | stainless steel | 2.6 kg | 10-001 10 871 |



hose kit

suitable for

- **hose kit for food and chemistry**

| nominal-Ø | length | material hose connector | weight | part no. |
|-----------|--------|-------------------------|--------|---------------|
| DN 19 | 2 m | stainless steel | 2.3 kg | 10-001 10 873 |
| | 3 m | stainless steel | 3.2 kg | 10-001 10 874 |
| DN 25 | 2 m | stainless steel | 2.3 kg | 10-001 10 868 |
| | 3 m | stainless steel | 3.2 kg | 10-001 10 869 |



hand nozzle S
(see page 13)

Swaged hose fittings for bonding electrically conductive hoses

for use in hazardous areas and for transferring high flammable liquids. Suitable for universal hose, hose for food and chemistry, special hose for food and chemistry

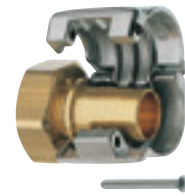
- **Swaged hose fitting for the connection of pump and hose**
weight brass: DN 13 – G ½ ~ 0.17 kg, DN 38 – G ½ ~ 0.50 kg
weight stainless steel: DN 13 – G ½ ~ 0.06 kg, DN 38 – G ½ ~ 0.50 kg

Hose connector in brass

| bracket clamp | seal | nominal-Ø | version | outer-Ø hose in mm | part no. |
|------------------|------|----------------|---------|--------------------|---------------|
| brass | PUR | DN 13 – G ½ | HE | 21 | 10-959 13 130 |
| brass | PUR | DN 19 – G 1 | HE | 27 | 10-959 13 116 |
| brass | | DN 19 – G 1 A | HE | 27 | 10-959 13 118 |
| brass | PUR | DN 19 – G 1¼ | HE | 27 | 10-959 13 192 |
| AL nickel-plated | PUR | DN 19 – G 1 | SL | 30 – 33 | 10-959 13 157 |
| AL nickel-plated | | DN 19 – G 1 A | SL | 30 – 33 | 10-959 13 156 |
| AL nickel-plated | PUR | DN 19 – G 1¼ | SL | 30 – 33 | 10-959 13 180 |
| AL nickel-plated | PUR | DN 21 – G 1¼ | SL | 30 – 33 | 10-959 13 230 |
| brass | PUR | DN 25 – G 1 | HE | 34 | 10-959 13 097 |
| brass | | DN 25 – G 1 A | HE | 34 | 10-959 13 099 |
| brass | PUR | DN 25 – G 1¼ | HE | 34 | 10-959 13 098 |
| AL nickel-plated | PUR | DN 25 – G 1 | SF | 36 – 38 | 10-959 13 158 |
| AL nickel-plated | PUR | DN 25 – G 1 A | SF | 36 – 38 | 10-959 13 159 |
| AL nickel-plated | PUR | DN 25 – G 1¼ | SF | 36 – 38 | 10-959 13 140 |
| AL nickel-plated | | DN 25 – G 1¼ A | SF | 36 – 38 | 10-959 13 188 |
| AL nickel-plated | PUR | DN 32 – G 1¼ | SF | 43 – 45 | 10-959 13 014 |
| AL nickel-plated | PUR | DN 32 – G 1½ | SF | 43 – 45 | 10-959 13 015 |
| AL nickel-plated | PUR | DN 38 – G 1½ | SF | 50 – 52 | 10-959 13 143 |
| | PUR | G 1¼ – G 1 A | reducer | | 10-959 06 019 |
| | PUR | G 1½ – G 1¼ A | reducer | | 10-959 06 002 |



ferrule type with union nut (female thread) = HE Version



with pinned safety clamps (Spannfix) = SF Version



with bolted clamps (Spannloc) = SL Version

Hose connector in stainless steel

| bracket clamp | seal | nominal-Ø | version | outer-Ø hose in mm | part no. |
|------------------|------|---------------|---------|--------------------|---------------|
| AL nickel-plated | PTFE | DN 13 – G ½ | SL | 22 – 24 | 10-959 13 178 |
| AL nickel-plated | PTFE | DN 19 – G 1 | SL | 30 – 33 | 10-959 13 160 |
| AL nickel-plated | PTFE | DN 19 – G 1¼ | SL | 30 – 33 | 10-959 13 181 |
| AL nickel-plated | PTFE | DN 21 – G 1¼ | SL | 30 – 33 | 10-959 13 231 |
| AL nickel-plated | PTFE | DN 25 – G 1 | SF | 36 – 38 | 10-959 13 161 |
| AL nickel-plated | | DN 25 – G 1 A | SF | 36 – 38 | 10-959 13 162 |
| AL nickel-plated | PTFE | DN 25 – G 1¼ | SF | 36 – 38 | 10-959 13 144 |
| AL nickel-plated | PTFE | DN 32 – G 1¼ | SF | 43 – 45 | 10-959 13 145 |
| AL nickel-plated | PTFE | DN 32 – G 1½ | SF | 43 – 45 | 10-959 13 146 |
| AL nickel-plated | PTFE | DN 38 – G 1½ | SF | 50 – 52 | 10-959 13 147 |
| S | PTFE | G 1½ – G 1¼ A | reducer | | 10-959 06 005 |

Hose connector in polypropylene

| bracket clamp | seal | nominal-Ø | version | outer-Ø hose in mm | part no. |
|------------------|------|--------------|---------|--------------------|---------------|
| AL nickel-plated | PE | DN 13 – G 1 | SL | 22 – 24 | 10-959 13 285 |
| AL nickel-plated | PE | DN 13 – G 1¼ | SL | 22 – 24 | 10-959 13 289 |
| AL nickel-plated | PE | DN 19 – G 1 | SL | 30 – 33 | 10-959 13 287 |
| AL nickel-plated | PE | DN 19 – G 1¼ | SL | 30 – 33 | 10-959 13 291 |
| AL nickel-plated | PE | DN 21 – G 1¼ | SL | 30 – 33 | 10-959 13 293 |
| AL nickel-plated | PE | DN 25 – G 1¼ | SF | 36 – 38 | 10-959 13 295 |
| S | PE | DN 13 – G 1 | SL | 22 – 24 | 10-959 13 317 |
| S | PE | DN 13 – G 1¼ | SL | 22 – 24 | 10-959 13 321 |
| S | PE | DN 19 – G 1 | SL | 30 – 33 | 10-959 13 319 |
| S | PE | DN 19 – G 1¼ | SL | 30 – 33 | 10-959 13 323 |
| S | PE | DN 21 – G 1¼ | SL | 30 – 33 | 10-959 13 325 |
| S | PE | DN 25 – G 1¼ | SL | 36 – 39 | 10-959 13 327 |

Swaged hose fittings

Hose connector in polyvinylidene fluoride

| bracket clamp | seal | nominal-Ø | version | outer-Ø hose in mm | part no. |
|------------------|------|--------------|---------|--------------------|---------------|
| AL nickel-plated | PTFE | DN 13 - G 1 | SL | 22 - 24 | 10-959 13 286 |
| AL nickel-plated | PTFE | DN 13 - G 1¼ | SL | 22 - 24 | 10-959 13 290 |
| AL nickel-plated | PTFE | DN 19 - G 1 | SL | 30 - 33 | 10-959 13 288 |
| AL nickel-plated | PTFE | DN 19 - G 1¼ | SL | 30 - 33 | 10-959 13 292 |
| AL nickel-plated | PTFE | DN 21 - G 1¼ | SL | 30 - 33 | 10-959 13 294 |
| AL nickel-plated | PTFE | DN 25 - G 1¼ | SF | 36 - 38 | 10-959 13 296 |
| S | PTFE | DN 13 - G 1 | SL | 22 - 24 | 10-959 13 318 |
| S | PTFE | DN 13 - G 1¼ | SL | 22 - 24 | 10-959 13 322 |
| S | PTFE | DN 19 - G 1 | SL | 30 - 33 | 10-959 13 320 |
| S | PTFE | DN 19 - G 1¼ | SL | 30 - 33 | 10-959 13 324 |
| S | PTFE | DN 21 - G 1¼ | SL | 30 - 33 | 10-959 13 326 |
| S | PTFE | DN 25 - G 1¼ | SL | 36 - 39 | 10-959 13 328 |

Swaged hose fittings for the connection of hose and hand nozzle

Connection hand nozzle Ø 28 mm, hose connector: PP

| bracket clamp | seal | nominal-Ø | version | outer-Ø hose in mm | part no. |
|------------------|------|-----------|---------|--------------------|---------------|
| AL nickel-plated | FKM | DN 19 | SL | 30 - 33 | 10-959 13 299 |
| AL nickel-plated | EPDM | DN 19 | SL | 30 - 33 | 10-959 13 300 |
| AL nickel-plated | FKM | DN 21 | SL | 30 - 33 | 10-959 13 304 |
| AL nickel-plated | EPDM | DN 21 | SL | 30 - 33 | 10-959 13 305 |
| AL nickel-plated | FKM | DN 25 | SF | 36 - 38 | 10-959 13 309 |
| AL nickel-plated | EPDM | DN 25 | SF | 36 - 38 | 10-959 13 310 |
| S | FKM | DN 19 | SL | 30 - 33 | 10-959 13 330 |
| S | EPDM | DN 19 | SL | 30 - 33 | 10-959 13 331 |
| S | FKM | DN 21 | SL | 30 - 33 | 10-959 13 335 |
| S | EPDM | DN 21 | SL | 30 - 33 | 10-959 13 336 |
| S | FKM | DN 25 | SL | 36 - 39 | 10-959 13 340 |
| S | EPDM | DN 25 | SL | 36 - 39 | 10-959 13 341 |



suitabel hand nozzle PP
see page 12

Connection hand nozzle Ø 28mm, hose connector: PP

| bracket clamp | seal | nominal-Ø | version | outer-Ø hose in mm | part no. |
|------------------|------|-----------|---------|--------------------|---------------|
| AL nickel-plated | FKM | DN 13 | SL | 22 - 24 | 10-959 13 298 |
| AL nickel-plated | FKM | DN 19 | SL | 30 - 33 | 10-959 13 301 |
| AL nickel-plated | EPDM | DN 19 | SL | 30 - 33 | 10-959 13 302 |
| AL nickel-plated | FFKM | DN 19 | SL | 30 - 33 | 10-959 13 303 |
| AL nickel-plated | FKM | DN 21 | SL | 30 - 33 | 10-959 13 306 |
| AL nickel-plated | EPDM | DN 21 | SL | 30 - 33 | 10-959 13 307 |
| AL nickel-plated | FFKM | DN 21 | SL | 30 - 33 | 10-959 13 308 |
| AL nickel-plated | FKM | DN 25 | SF | 36 - 38 | 10-959 13 311 |
| AL nickel-plated | EPDM | DN 25 | SF | 36 - 38 | 10-959 13 312 |
| AL nickel-plated | FFKM | DN 25 | SF | 36 - 38 | 10-959 13 313 |
| S | FKM | DN 13 | SL | 22 - 24 | 10-959 13 329 |
| S | FKM | DN 19 | SL | 30 - 33 | 10-959 13 332 |
| S | EPDM | DN 19 | SL | 30 - 33 | 10-959 13 333 |
| S | FFKM | DN 19 | SL | 30 - 33 | 10-959 13 334 |
| S | FKM | DN 21 | SL | 30 - 33 | 10-959 13 337 |
| S | EPDM | DN 21 | SL | 30 - 33 | 10-959 13 338 |
| S | FFKM | DN 21 | SL | 30 - 33 | 10-959 13 339 |
| S | FKM | DN 25 | SL | 36 - 39 | 10-959 13 342 |
| S | EPDM | DN 25 | SL | 36 - 39 | 10-959 13 343 |
| S | FFKM | DN 25 | SL | 36 - 39 | 10-959 13 344 |



suitabel hand nozzle PVDF
see page 12

Bracket clamp stainless steel ECTFE coated

for corrosion protection. With screws and nuts out of HC

| nominal-Ø | part no. |
|-----------|---------------|
| DN 13 | 10-959 13 345 |
| DN 19 | 10-959 13 346 |
| DN 25 | 10-959 13 347 |

Hoses without Inliner

for use with hose connections (page 6) or swaged hose fitting (page 9-10).

- **PVC hose with fabric lining**

suitable for food contact according to Regulation (EC) 1935/2004, temperature: max. +60 °C

| nominal-Ø | outer-Ø | operating pressure max. | weight per meter | part no. |
|-----------|---------|-------------------------|------------------|---------------|
| DN 13 | 20 mm | 10 bar | 0.22 kg | 10-001 10 008 |



- **PVC hose with steel wire-helix**

suitable for food contact according to Regulation (EC) 1935/2004, temperature: -5 °C up to +65 °C

| Nennweite | outer-Ø | operating pressure max. | weight per meter | part no. |
|-----------|---------|-------------------------|------------------|---------------|
| DN 19 | 27 mm | 5 bar | 0.34 kg | 10-001 10 040 |
| DN 25 | 33 mm | 5 bar | 0.51 kg | 10-001 10 041 |
| DN 32 | 41 mm | 4,5 bar | 0.65 kg | 10-001 10 042 |
| DN 38 | 47 mm | 4 bar | 0.80 kg | 10-001 10 043 |
| DN 50 | 60 mm | 3 bar | 1.20 kg | 10-001 10 044 |



- **Petroleum hose**

electrically conductive Ω to EN 12115:2011, tube: NBR black, over: NBR/PVC, temperature: -30 °C up to +80 °C

| nominal-Ø | outer-Ø | operating pressure max. | weight per meter | part no. |
|-----------|---------|-------------------------|------------------|---------------|
| DN 13 | 21 mm | 10 bar | 0.30 kg | 10-001 10 076 |
| DN 19 | 27 mm | 10 bar | 0.40 kg | 10-001 10 065 |
| DN 25 | 34 mm | 10 bar | 0.50 kg | 10-001 10 002 |



electrically conductive Ω /T to EN 12115:2011, tube: NBR black, over: CR black, temperature: -30 °C up to +80 °C

| nominal-Ø | outer-Ø | operating pressure max. | weight per meter | part no. |
|-----------|---------|-------------------------|------------------|---------------|
| DN 32 | 44 mm | 25 bar | 1.00 kg | 10-001 10 003 |
| DN 38 | 51 mm | 25 bar | 1.20 kg | 10-001 10 004 |

- **Special foodgrade hose**

suitable for food contact according to Regulation (EC) 1935/2004 and FDA CFR 21. tube: NBR white, cover: NBR/PVC blue, temperature: -25 °C up to +80 °C

| nominal-Ø | outer-Ø | operating pressure max. | weight per meter | part no. |
|-----------|---------|-------------------------|------------------|---------------|
| DN 25 | 37 mm | 16 bar | 0.80 kg | 10-001 10 022 |
| DN 38 | 51 mm | 16 bar | 1.7 kg | 10-001 10 023 |



Hoses with inliner

for use with swaged hose fittings (page 9-10).

- **Universal hose** electrically conductive Ω to EN 12115:2011, tube: fluoropolymer THV seamless temperature: -40 °C up to +100 °C

| nominal-Ø | outer-Ø | operating pressure max. | weight per meter | part no. |
|-----------|---------|-------------------------|------------------|---------------|
| DN 21 | 31 mm | 16 bar | 0.6 kg | 10-001 10 838 |



- **Hose for food and chemistry** electrically conductive Ω /T to EN 12115:2011 suitable for food contact according to Regulation (EC) 1935/2004 and FDA CFR 21 tube: ultra-high molecular PE transparent, cover: EPDM black, temperature: -30 °C up to +100 °C

| nominal-Ø | outer-Ø | operating pressure max. | weight per meter | part no. |
|-----------|---------|-------------------------|------------------|---------------|
| DN 13 | 22 mm | 16 bar | 0.30 kg | 10-001 10 085 |
| DN 19 | 31 mm | 16 bar | 0.60 kg | 10-001 10 037 |
| DN 25 | 37 mm | 16 bar | 0.80 kg | 10-001 10 030 |
| DN 32 | 43 mm | 16 bar | 1.00 kg | 10-001 10 036 |
| DN 38 | 51 mm | 16 bar | 1.20 kg | 10-001 10 086 |



- **Special hose for food and chemistry** electrically conductive Ω to EN 12115:2011 suitable for food contact according to FDA CFR 21, tube: fluorine polymer white, cover: CR black, temperature: -30 °C up to +100 °C

| nominal-Ø | outer-Ø | operating pressure max. | weight per meter | part no. |
|-----------|---------|-------------------------|------------------|---------------|
| DN 19 | 31 mm | 16 bar | 0.80 kg | 10-001 10 097 |
| DN 25 | 37 mm | 16 bar | 1.00 kg | 10-001 10 046 |
| DN 32 | 44 mm | 16 bar | 1.30 kg | 10-001 10 029 |



Hand nozzles

Hand nozzles with hose connection – for use with hoses without inliner.

- **For low volumes, material: polypropylene**, operating pressure: max. 1.5 bar, flow rate: max. 35 l/min (water), viscosity: max. 350 mPas (cP), temperature: max. 45 °C

| nominal-Ø | seal | outlet | weight | part no. |
|-----------|------|--------|---------|---------------|
| DN 13 | FKM | 6 mm | 0.11 kg | 10-001 13 001 |
| DN 13 | FKM | 11 mm | 0.11 kg | 10-001 13 034 |
| DN 19 | FKM | 11 mm | 0.11 kg | 10-001 13 039 |
| DN 19 | FKM | 20 mm | 0.11 kg | 10-001 13 000 |
| DN 25 | FKM | 20 mm | 0.11 kg | 10-001 13 035 |

- **Material: polypropylene** with safety handle and swivel inlet, operating pressure: max. 3 bar, flow rate: max. 80 l/min (water), viscosity: max. 800 mPas (cP), temperature: max. 50 °C

| nominal-Ø | seal | outlet | weight | part no. |
|-----------|------|--------|---------|---------------|
| DN 19 | FKM | 25 mm | 0.26 kg | 10-001 12 500 |
| DN 19 | EPDM | 25 mm | 0.26 kg | 10-001 12 506 |
| DN 25 | FKM | 25 mm | 0.26 kg | 10-001 12 504 |
| DN 25 | EPDM | 25 mm | 0.26 kg | 10-001 12 510 |

- **AdBlue®* Version, material: polypropylene** with safety handle and swivel inlet

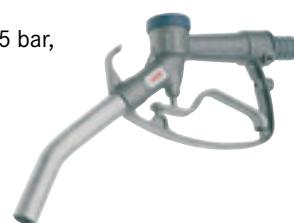
| nominal-Ø | seal | outlet | weight | part no. |
|-----------|------|--------|---------|---------------|
| DN 19 | FKM | 19 mm | 0.26 kg | 10-001 12 518 |

- **Material: polyvinylidene fluoride** with safety handle and swivel inlet; operating pressure: max. 3 bar, flow rate: max. 60 l/min (water), viscosity: max. 800 mPas (cP), temperature: max. 50 °C

| nominal-Ø | seal | outlet | weight | part no. |
|-----------|------|--------|---------|---------------|
| DN 19 | FKM | 25 mm | 0.36 kg | 10-001 12 501 |
| DN 19 | EPDM | 25 mm | 0.36 kg | 10-001 12 507 |
| DN 19 | FFKM | 25 mm | 0.36 kg | 10-001 12 512 |
| DN 25 | FKM | 25 mm | 0.36 kg | 10-001 12 505 |
| DN 25 | EPDM | 25 mm | 0.36 kg | 10-001 12 511 |
| DN 25 | FFKM | 25 mm | 0.36 kg | 10-001 12 514 |

- **Hand nozzle AL** with safety handle and swivel inlet (hose connector or threaded connector); suitable for solvents and neutral liquids, material: brass, nickel-plated, operating pressure: max. 3.5 bar, flow rate: max. 80 l/min (water), viscosity: max. 800 mPas (cP), temperature: max. 50 °C

| nominal-Ø | seal | outlet | weight | part no. |
|-----------|------|--------|---------|---------------|
| DN 19 | NBR | 25 mm | 0.50 kg | 10-001 12 397 |
| DN 25 | NBR | 25 mm | 0.50 kg | 10-001 12 172 |
| G 1 | NBR | 25 mm | 0.50 kg | 10-001 12 171 |



Hand nozzles without hose connection – for use with hoses with inliner.

Swaged hose fittings see page 9-10.

- **Material: polypropylene** with safety handle and swivel inlet operating pressure: max. 3 bar, flow rate: max. 60 l/min (water), viscosity: max. 800 mPas (cP), temperature: max. 50 °C

| nominal-Ø | seal | outlet | weight | part no. |
|-----------|------|--------|---------|---------------|
| Ø 28 | FKM | 25 mm | 0.26 kg | 10-001 12 556 |
| Ø 28 | EPDM | 25 mm | 0.26 kg | 10-001 12 557 |

- **Material: polyvinylidene fluoride** with safety handle and swivel inlet; operating pressure: max. 3 bar, flow rate: max. 80 l/min (water), viscosity: max. 800 mPas (cP), temperature: max. 50 °C

| nominal-Ø | seal | outlet | weight | part no. |
|-----------|------|--------|---------|---------------|
| Ø 28 | FKM | 25 mm | 0.36 kg | 10-001 12 558 |
| Ø 28 | EPDM | 25 mm | 0.36 kg | 10-001 12 559 |
| Ø 28 | FFKM | 25 mm | 0.36 kg | 10-001 12 560 |



* AdBlue® is a registered trademark of: Verband der Automobilindustrie e.V. (VDA)

Hand nozzle with hose connection – for use with hoses without inliner

- **Material: stainless steel 316 Ti** with safety handle and swivel inlet operating pressure: max. 4 bar, flow rate: max. 60 l/min (water), viscosity: max. 800 mPas (cP), temperature: max. 100 °C

| nominal-Ø | seal | outlet Ø | weight | part no. |
|------------|----------|----------|--------|---------------|
| DN 19 | PTFE/FEP | 28 mm | 1.4 kg | 10-001 12 541 |
| DN 25 | PTFE/FEP | 28 mm | 1.4 kg | 10-001 12 542 |
| G 1 male | PTFE/FEP | 28 mm | 1.4 kg | 10-001 12 543 |
| G 1 ¼ male | PTFE/FEP | 28 mm | 1.4 kg | 10-001 12 544 |



- **Hand nozzle MS** with safety handle and swivel inlet (hose connector or threaded connector); suitable for solvents and neutral liquids, **material: brass, nickel-plated**, operating pressure: max. 4 bar, flow rate: max. 80 l/min (water), viscosity: max. 900 mPas (cP), temperature: max. 80 °C

| nominal-Ø | seal | outlet Ø | weight | part no. |
|------------|------|----------|---------|---------------|
| DN 25 | PTFE | 25 mm | 1.05 kg | 10-001 12 337 |
| DN 32 | PTFE | 25 mm | 1.05 kg | 10-001 12 338 |
| G 1 female | PTFE | 25 mm | 1.05 kg | 10-001 12 339 |
| G 1 male | PTFE | 25 mm | 1.05 kg | 10-001 12 389 |



Hand nozzles without hose connection – for use with hoses with inliner.

Swaged hose fittings see page 10.

- **Material: stainless steel 316 Ti** with safety handle and swivel inlet, operating pressure: max. 3 bar, flow rate: max. 80 l/min (water), viscosity: max. 800 mPas (cP), temperature: max. 100 °C

| nominal-Ø | seal | outlet Ø | weight | part no. |
|-----------|----------|----------|--------|---------------|
| Ø 28 | PTFE/FEP | 28 mm | 1.4 kg | 10-001 12 549 |



- **Material: brass, nickel-plated** with safety handle and swivel inlet, operating pressure: max. 4 bar, flow rate: max. 80 l/min (water), viscosity: max. 900 mPas, temperature: max. 80 °C

| nominal-Ø | seal | outlet Ø | weight | part no. |
|-----------|------|----------|---------|---------------|
| Ø 32 | PTFE | 25 mm | 1.05 kg | 10-001 12 340 |



- **Material: aluminium (AL 20)** spring actuated, with safety handle and rigid inlet (threaded connector) or swivel inlet (threaded connector); suitable for petrol, diesel oil, fuel oil, crude oil. Operating pressure: 0.5 - 3.5 bar, flow rate: max. 80 l/min (water), viscosity: max. 7 mPas (cP), temperature: max. 55 °C

| nominal-Ø | seal | outlet Ø | weight | part no. |
|-----------|------|----------|---------|---------------|
| G 1 male | PTFE | 24 mm | 0.95 kg | 10-001 12 109 |
| G 1 male | NBR | 24 mm** | 0.95 kg | 10-001 12 347 |

* with swivel inlet, ** for use with fume cone



- **Material: aluminium (AL 20 R unleaded)** spring actuated, with safety handle and swivel inlet (threaded connector); suitable for unleaded petrol and diesel oil. Operating pressure: 0.5 - 3.5 bar, flow rate: max. 80 l/min (water), viscosity: max. 7 mPas (cP), temperature: max. 55 °C

| nominal-Ø | seal | outlet Ø | weight | part no. |
|-----------|------|----------|---------|---------------|
| G 1 male | NBR | 21 mm | 1.10 kg | 10-001 12 097 |



Longer outlet tube

220 mm long, Ø 20 mm

| material | part no. |
|-------------------------|---------------|
| polypropylene | 10-001 12 228 |
| polyvinylidene fluoride | 10-001 12 241 |
| stainless steel | 10-001 12 285 |



Other pump accessories

Adaptor

in PP for JUNIORFLUX/COMBIFLUX pumps
to secure the pump in canisters or plastic drums

| Ø canister-/drum bunghole | pump-Ø | part no. |
|---------------------------|--------|---------------|
| 45 mm | 25 mm | 10-001 14 069 |
| 45 mm | 28 mm | 10-001 14 070 |
| 45 mm | 32 mm | 10-001 14 071 |
| 65 mm | 25 mm | 10-001 14 072 |
| 65 mm | 28 mm | 10-001 14 073 |
| 65 mm | 32 mm | 10-001 14 074 |



Compression gland

to secure the pump in the bunghole of the drum

• Compression gland in PE

| connection thread | pump-Ø | part no. |
|-------------------|--------|---------------|
| 57 x 4 male | 41 mm | 10-001 14 067 |
| 70 x 6 male | 41 mm | 10-001 14 065 |
| 70 x 6 male | 50 mm | 10-001 14 066 |



• Compression gland in PP electrically conductive

| connection thread | pump-Ø | part no. |
|-------------------|----------|---------------|
| R2 male | 40/41 mm | 10-001 14 054 |
| R2 male | 50 mm | 10-001 14 062 |
| R2 male | 25 mm | 10-001 14 076 |
| R2 male | 28 mm | 10-001 14 077 |
| R2 male | 32 mm | 10-001 14 078 |



• Compression gland in steel/zinc-plated

| connection thread | pump-Ø | part no. |
|-------------------|--------|---------------|
| G 2 male/M 64 x 4 | 40 mm | 10-001 14 061 |
| G 2 male/M 64 x 4 | 41 mm | 10-001 14 000 |
| G 2 male | 50 mm | 10-001 14 003 |
| M 64 x 4 male | 50 mm | 10-001 14 002 |



Quick action coupling SSK 400

for a quick assembly of motor and drum pump. Consisting of: threaded ring (motor side) and clamping element (pump side). (For hazardous areas only allowed in combination with equipotential bonding on pump and motor)

| | part no. |
|------------------|---------------|
| complete | 10-001 10 802 |
| threaded ring | 10-001 10 800 |
| clamping element | 10-001 10 804 |



Mixing tube

to use the drum pump F 430 as a mixer, with a few simple steps the outer tube of the pump can be replaced with the mixing tube, immersion length: 1 000 mm

| material | pump-Ø | weight | part no. |
|----------------------|--------|---------|---------------|
| aluminium (AL) | 41 mm | 0.73 kg | 10-430 11 193 |
| stainless steel (S)* | 41 mm | 1.64 kg | 10-430 21 193 |
| polypropylene (PP) | 40 mm | 0.42 kg | 10-430 41 193 |



*not allowed in hazardous areas

FLUX fume gland

prevents emission of high aggressive fumes while pumping out of drums which can cause damage on human beings or the environment

The fume gland consists of a valve part and a threaded ring. For use with a drum pump.

- **Valve part in polypropylene (PP), o-ring in FKM**

| | pump-Ø | part no. |
|-----------------|--------|---------------|
| with ball valve | 25 mm | 10-001 14 309 |
| with ball valve | 32 mm | 10-001 14 313 |
| with ball valve | 40 mm | 10-001 14 181 |
| with ball valve | 41 mm | 10-001 14 182 |
| with ball valve | 50 mm | 10-001 14 243 |

For use with a gas compensation hose, hose nozzle (10-959 13 128) is required.



- **Threaded ring in polypropylene (PP), flat seal in FKM**

| connection thread | pump-Ø | part no. |
|-------------------|------------------------------|---------------|
| G 2 male | 25/32/40/41 mm | 10-001 14 218 |
| S 57 x 4 male | 25/32/40/41 mm | 10-001 14 224 |
| S 60 x 6 female | 25/32/40/41 mm | 10-001 14 228 |
| S 70 x 6 female | 25/32/40/41 mm | 10-001 14 226 |
| S 70 x 6 male | 25/32/40/41 mm | 10-001 14 232 |
| BCS 70 x 6 male | 25/32/40/41 mm (with o-ring) | 10-001 14 236 |
| G 2 A male | 50 mm | 10-001 14 238 |
| S 70 x 6 male | 50 mm | 10-001 14 267 |
| S 70 x 6 female | 50 mm | 10-001 14 269 |
| CC 64 x 5 male | 40/41 mm | 10-001 14 230 |
| CCS 64 x 5 female | 40/41 mm | 10-001 14 271 |
| CCS 64 x 5 male | 50 mm | 10-001 14 265 |



- **Valve part in stainless steel 316 Ti (S)**

| | pump-Ø | part no. |
|------------------------------------|--------|---------------|
| with ball valve, o-ring FEP | 41 mm | 10-001 14 192 |
| with ball valve, o-ring FEP | 50 mm | 10-001 14 253 |
| o-ring FKM | 28 mm | 10-001 14 319 |
| with gas compensation nozzle G 3/8 | 41 mm | 10-001 14 194 |
| with gas compensation nozzle G 3/8 | 50 mm | 10-001 14 245 |



- **Threaded ring in stainless steel 316 Ti (S), flat seal in PE**

| connection thread | pump-Ø | part no. |
|-------------------|----------|---------------|
| G 2 male | 28/41 mm | 10-001 14 325 |
| S 57 x 4 male | 28/41 mm | 10-001 14 329 |
| G 2 male | 50 mm | 10-001 14 331 |



- **Threaded ring in brass, nickel-plated (MS), flat seal in PE**

| connection thread | pump-Ø | part no. |
|-------------------|--------|---------------|
| G 2 male | 41 mm | 10-001 14 327 |
| G 2 male | 50 mm | 10-001 14 333 |

Union joint hose

DN 10 (PP) for mounting onto valve part PP, S, MS when using a gas compensation nozzle

| | part no. |
|------------|---------------|
| G 1/4 male | 10-959 13 128 |



PE-corrugated hose

DN 10 for gas compensation hose

| | part no. |
|---------------|---------------|
| outer-Ø 13 mm | 10-001 10 061 |



NBR-hose

for gas compensation hose, DN 10 electrically conductive

| | part no. |
|--------------|---------------|
| outer-Ø 17mm | 10-001 10 098 |



Fume cone

PP, weight: 0.10 kg

| | part no. |
|--------------------------------|---------------|
| for longer outlet tube Ø 20 mm | 10-001 14 285 |
| for outlet Ø 24 mm | 10-001 14 296 |



Other pump accessories

Discharge spout

for direct mounting onto the pump, outlet in order to allow the filling of adjacent containers and tanks

- with union nut G 1 female for use with **JUNIORFLUX**

| material | nominal-Ø | weight | part no. |
|--------------------|-----------|---------|---------------|
| polypropylene (PP) | DN 19 | 0.03 kg | 10-959 07 008 |

- with union nut G 1¼ female for use with **drum pumps**

| material | nominal-Ø | weight | part no. |
|---------------------|-----------|---------|---------------|
| stainless steel (S) | DN 25 | 0.38 kg | 10-959 07 007 |
| polypropylene (PP) | DN 19 | 0.04 kg | 10-959 07 009 |



Suction strainer

to protect the pump against coarse impurities. For mounting on the pump suction

| material | pump-Ø | (suction strainer-Ø) | weight | part no. |
|-------------------------|---|----------------------|---------|---------------|
| polypropylene | 40/41 mm | 53 mm | 0.03 kg | 10-001 10 200 |
| polypropylene | 50 mm | 60 mm | 0.04 kg | 10-001 10 205 |
| polyvinylidene fluoride | 40/41 mm | 53 mm | 0.04 kg | 10-001 10 245 |
| polyvinylidene fluoride | 50 mm | 60 mm | 0.06 kg | 10-001 10 267 |
| stainless steel | 41 mm | 53 mm | 0.17 kg | 10-001 10 209 |
| stainless steel | 43 mm | 53 mm | 0.17 kg | 10-001 10 294 |
| | for use with F 424 S-43/38 and -43/37 Z | | | |
| stainless steel | 50 mm | 60 mm | 0.19 kg | 10-001 10 212 |



Inliner suction protection

for use with inliner, prevents the ingress of the inliner in the pump, material stainless steel (316 Ti)

| pump-Ø | part no. |
|--------|---------------|
| 50 mm | 10-001 10 347 |
| 54 mm | 10-001 10 350 |



Flowback stop valve

prevents the flow back of the liquid type stainless steel: connection thread: G 1¼ female – G 1¼ male

- for mounting onto the **drum pump** outlet of the **F 424 – F 430**

| material | seal | weight | part no. |
|-----------------|------|---------|---------------|
| stainless steel | FKM | 0.53 kg | 10-959 14 024 |
| stainless steel | FFKM | 0.53 kg | 10-959 14 048 |

- for mounting onto the **drum pump** foot of the **F 430 40/33**

| material | weight | part no. |
|-------------------------|---------|---------------|
| polypropylene | 0.25 kg | 10-959 14 029 |
| polyvinylidene fluoride | 0.28 kg | 10-959 14 038 |

- for mounting onto the **drum pump** foot of the **F 430 40/33 Z**

| material | weight | part no. |
|-------------------------|---------|---------------|
| polypropylene | 0.25 kg | 10-959 14 030 |
| polyvinylidene fluoride | 0.28 kg | 10-959 14 039 |



By-pass valve

for eccentric worm-drive pumps. Safety valve against possibly upcoming overpressure in the pump system, connection thread G 1½ female – G 1½ male for mounting onto the outlet, range of setting: stainless steel (316 Ti): 4 – 6 bar, brass: 2 – 8 bar

| material, seal | connection | weight | part no. |
|-----------------------|----------------------------|---------|---------------|
| brass, PTFE | flow back tube 300 mm long | 3.10 kg | 10-001 18 026 |
| brass, PTFE | hose connection DN 19 | 2.70 kg | 10-001 18 028 |
| stainless steel, FKM | flow back tube 300 mm long | 2.30 kg | 10-001 18 027 |
| stainless steel, FKM | hose connection DN 19 | 1.90 kg | 10-001 18 029 |
| stainless steel, PTFE | hose connection DN 19 | 1.90 kg | 10-001 18 046 |
| brass, PTFE | hose connection DN 25 | 1.90 kg | 10-001 18 056 |
| stainless steel, FKM | hose connection DN 25 | 1.90 kg | 10-001 18 057 |
| stainless steel, PTFE | hose connection DN 25 | 1.90 kg | 10-001 18 058 |



Attachment clamp

to securely the pump in open containers or drums material: steel/zinc-plated, PP

| pump-Ø | weight | part no. |
|----------|---------|---------------|
| 40/41 mm | 0.84 kg | 10-001 10 601 |
| 50 mm | 0.84 kg | 10-001 10 603 |
| 54 mm | 0.84 kg | 10-001 10 604 |



Container clip

to suspend the pump into open containers

| material | pump-Ø | weight | part no. |
|-----------------|----------|---------|---------------|
| stainless steel | 40/41 mm | 0.12 kg | 10-001 15 005 |
| PVC coated | 50 mm | 0.14 kg | 10-001 15 006 |



Mounting flange

acc. to DIN 2501 for stationary installation of the drum pump. The flange is welded onto the outer tube of the pump, dimensions: outer-Ø 165 mm, pitch circle-Ø 125 mm, bores 4 x 18 mm

| material | weight | part no. |
|-------------------------|---------|---------------|
| polypropylene | 0.37 kg | 10-947 14 021 |
| polyvinylidene fluoride | 0.70 kg | 10-947 14 034 |
| stainless steel 1 4571* | 1.50 kg | 10-947 14 033 |

* not allowed with stainless steel pumps which are used in hazardous areas.



Wall bracket

for secure storage of the pump. Incl. fixing screws

| pump | weight | part no. |
|--------------------------|---------|---------------|
| drum pumps F 424 – F 430 | 0.37 kg | 10-001 10 426 |



Hoist

with infinitely adjustable load balancer

| carrying force | rope length | weight | part no. |
|----------------|-------------|---------|---------------|
| 9 – 14 kg | 2 m | 3.75 kg | 10-001 21 000 |
| 16 – 21 kg | 2 m | 4.15 kg | 10-001 21 002 |



Carrying handle

allowing easy immersion and removal of the pump.

- for pumps with commutator motor, steel, painted in black

| for motor | weight | part no. |
|---|---------|---------------|
| F 457 | 0.35 kg | 10-001 10 533 |
| F 458, F 458-1, F 460 Ex, F 460-1 Ex FBM 4000 Ex | 0.35 kg | 10-001 10 557 |

- for pumps with three-phase gearmotor, steel, painted in black

| | weight | part no. |
|-------------|---------|---------------|
| Motor F 414 | 0.37 kg | 10-001 10 582 |

- for pumps with single-phase AC-motor, three-phase motor or air motor
carrying handle will be connected to the pump by screws.

| motor | flange | weight | part no. |
|--|--------|---------|---------------|
| AC-motor F 403 | Ø 120 | 0.85 kg | 10-001 10 584 |
| 3-phase motor F 403 Ex | Ø 120 | 1.10 kg | 10-001 10 587 |
| 3-phase motor up to 3 kW | Ø 160 | 1.20 kg | 10-001 10 571 |
| 3-phase motor up to 4 kW | Ø 160 | 1.30 kg | 10-001 10 531 |
| Ex-proof 3-phase motor up to 3.3 kW | Ø 160 | 1.30 kg | 10-001 10 586 |
| air motor FPM 2-8 Ex | Ø 160 | 1.00 kg | 10-001 10 520 |

- for motor flange Ø 160, stainless steel, separate fixation of pump and motor – single disconnection of the pump is possible, motor stays at the carrying handle.

| motor | weight | part no. |
|------------------------------|---------|---------------|
| for 3-phase motor up to 4 kW | 1.70 kg | 10-001 10 590 |



Accessories for drive motors

Earth (ground) wire with crocodile clip

for electrically bonding the explosion-proof pump to the container. For equipotential bonding

| colour | cable cross-section | weight | length | forceps | part no. |
|--------------|---------------------|---------|--------|-----------------|---------------|
| yellow | 3 mm ² | 0.52 kg | 4 m | stainless steel | 10-931 90 023 |
| green/yellow | 4 mm ² | 0.15 kg | 2 m | steel | 10-931 90 015 |



Motor protection switch

prevents the three-phase motor from overload.

The ranges of setting apply to 400 Volt only.

- not for use in hazardous areas, fixation on motor is possible, protected to IP 65, weight: 0.85 kg

| range of setting | part no. |
|------------------|---------------|
| 0.85 – 1.35 A | 10-936 06 167 |
| 1.30 – 2.00 A | 10-936 06 168 |
| 1.80 – 3.00 A | 10-936 06 169 |
| 2.80 – 4.60 A | 10-936 06 170 |
| 4.20 – 6.70 A | 10-936 06 171 |
| 6.50 – 10.00 A | 10-936 06 172 |
| 10.00 – 16.00 A | 10-936 06 173 |



- Explosion-proof motor protection switch**

explosion-proof to II2 EEx de IIC T6 protected to IP 65, for mounting on carrying handle or wall, weight: 2.64 kg

| range of setting | part no. |
|------------------|---------------|
| 1.0–1.6 A | 10-936 06 137 |
| 1.6–2.5 A | 10-936 06 118 |
| 2.5–4.0 A | 10-936 06 119 |
| 4.0–6.5 A | 10-936 06 120 |



Power supply cable

for three-phase motors

| | weight | part no. |
|--|-----------|---------------|
| per meter | 0.26 kg/m | 10-934 08 901 |
| pre-assembled with sleeve without plug , 5 m long | 1.30 kg | 10-934 08 025 |
| pre-assembled with sleeve and Cekon plug , 5 m long | 1.42 kg | 10-934 08 020 |
| cable assembly to motor, switch or connector | | 10-000 00 250 |



Cekon plug

5-pole

| | weight | part no. |
|-------------------------------|---------|---------------|
| without phase changing switch | 0.14 kg | 10-937 01 014 |
| with phase changing switch | 0.20 kg | 10-937 01 035 |



Explosion-proof plug

3-pole CEE-type plug, explosion-proof to II 2 G EEx de IIC T6, 220-240 Volt, protected to IP 65

| system | weight | part no. |
|--------|---------|---------------|
| CEAG | 0.35 kg | 10-937 01 030 |
| Steel | 0.27 kg | 10-937 01 018 |



Explosion-proof socket

3-pole CEE-type socket, explosion-proof to II 2 G EEx de IIC T6, 220-240 Volt, protected to IP 65

| system | weight | part no. |
|--------|---------|---------------|
| CEAG | 0.95 kg | 10-937 50 041 |
| Steel | 0.92 kg | 10-937 50 022 |



Explosion-proof plug

5-pole CEE-type plug, explosion-proof to II 2 G EEx de IIC T6, 380-415 Volt, protected to IP 65

| system | weight | part no. |
|--------|---------|---------------|
| CEAG | 0.35 kg | 10-937 01 029 |
| Steel | 0.27 kg | 10-937 01 020 |



Explosion-proof socket

5-pole CEE-type socket, explosion-proof to II 2 G EEx de IIC T6, 380-415 Volt, protected to IP 65

| system | weight | part no. |
|--------|---------|---------------|
| CEAG | 0.95 kg | 10-937 50 040 |
| Steel | 0.92 kg | 10-937 50 024 |



Filter-regulator-lubricator unit

for compressed air motors type F 416 Ex, F 416-1 Ex, F 416-2 Ex and FPM 4-8 Ex; for air conditioning and regulation of the operating pressure. Consisting of: water separator, pressure gauge and lubricator. Female thread on inlet and outlet

| connection | weight | part no. |
|------------------------------------|---------|---------------|
| G ¼ female – G ¼ female (F416..Ex) | 0.75 kg | 10-001 10 100 |
| G ½ female – G ½ female (FPM..Ex) | 1.90 kg | 10-001 10 103 |



Fine filter sound absorber

with oil separator for noise reduction

| | weight | part no. |
|----------------|---------|---------------|
| type FS 3 | 0.57 kg | 10-947 15 003 |
| fixing element | 0.1 kg | 10-947 15 004 |



Exhaust air hose kit for fine filter

| consisting of: | part no. |
|--|---------------|
| 5 m PVC hose, 2 x hose nozzle, 2 x flat seal, 2 x 1-ear-clip | 10-001 10 886 |

Pressure regulator

| | connection | part no. |
|-----------------------|------------|---------------|
| FDM 06 / 10 / 12 / 25 | G ¼ female | 10-001 10 101 |
| FDM 25 / 40 / 50 / 80 | G ½ female | 10-001 10 102 |



Accessories for FOOD version

Accessories for drum pumps and eccentric worm-drive pumps in FOOD version suitable for food contact according to Regulation (EC) 1935/2004 and FDA CFR 21

Hose connection

material: stainless steel

| clamp | nominal-Ø | seal | part no. |
|-------|-----------|------|---------------|
| 1½" | DN 19 | FKM | 10-959 04 171 |
| 1½" | DN 19 | NBR | 10-959 04 172 |
| 1½" | DN 25 | FKM | 10-959 04 169 |
| 1½" | DN 25 | NBR | 10-959 04 170 |
| 2" | DN 32 | FKM | 10-959 04 173 |
| 2" | DN 32 | NBR | 10-959 04 174 |
| 2" | DN 38 | FKM | 10-959 04 175 |
| 2" | DN 38 | NBR | 10-959 04 176 |



Swaged hose fitting

for the connection of pump and hose suitable for for hose for food and chemistry, spezial hose for food and chemistry. Screw-on type, material: stainless steel

| clamp | nominal-Ø | seal | part no. |
|-------|-----------|------|---------------|
| 1½" | DN 19 | FKM | 10-959 13 354 |
| 1½" | DN 19 | NBR | 10-959 13 355 |
| 1½" | DN 25 | FKM | 10-959 13 356 |
| 1½" | DN 25 | NBR | 10-959 13 357 |
| 2" | DN 25 | FKM | 10-959 13 358 |
| 2" | DN 25 | NBR | 10-959 13 359 |
| 2" | DN 32 | FKM | 10-959 13 360 |
| 2" | DN 32 | NBR | 10-959 13 361 |
| 2" | DN 38 | FKM | 10-959 13 362 |
| 2" | DN 38 | NBR | 10-959 13 363 |



Discharge spout

material: stainless steel

| clamp | seal | part no. |
|-------|------|---------------|
| 1½" | FKM | 10-959 07 030 |
| 1½" | NBR | 10-959 07 033 |
| 2" | FKM | 10-959 07 034 |
| 2" | NBR | 10-959 07 035 |



Flap valve

material: stainless steel

| clamp | nominal-Ø | seal | part no. |
|-------|-----------|------|---------------|
| 1½" | DN 38 | NBR | 10-959 19 006 |
| 1½" | DN 38 | FKM | 10-959 19 004 |
| 2" | DN 50 | FKM | 10-959 19 005 |
| 2" | DN 50 | NBR | 10-959 19 007 |



Hand nozzle

for use in connection with FLUX drum pump FP 430 Ex S FOOD for alcohol material: stainless steel, outlet Ø 28 mm

| clamp | seal | part no. |
|-------|----------|---------------|
| 1½" | PTFE/FKM | 10-001 12 568 |





A series of horizontal dotted lines spanning the width of the page, intended for taking notes.



A series of horizontal dotted lines spanning the width of the page, intended for taking notes.



More than just pumps

Today the FLUX name is recognised around the globe as the trademark for top standards in pump technology. Everything started with the invention of the electric drum pump in 1950. Nowadays FLUX has an extensive range of products each of which can be customized. FLUX pumps are used for example in the chemical and pharmaceutical industries; in machinery and plant engineering as well as companies in electroplating, wastewater treatment and the food sector.

Whether single-product or system solution – FLUX quality is synonymous with a long service life, excellent economy and maximum safety.

In addition to the excellent product quality FLUX customers appreciate the superb level of expertise our staff has to offer as well as their genuine customer focus.

These days FLUX-GERÄTE GMBH supplies pumps to almost 100 countries around the globe.