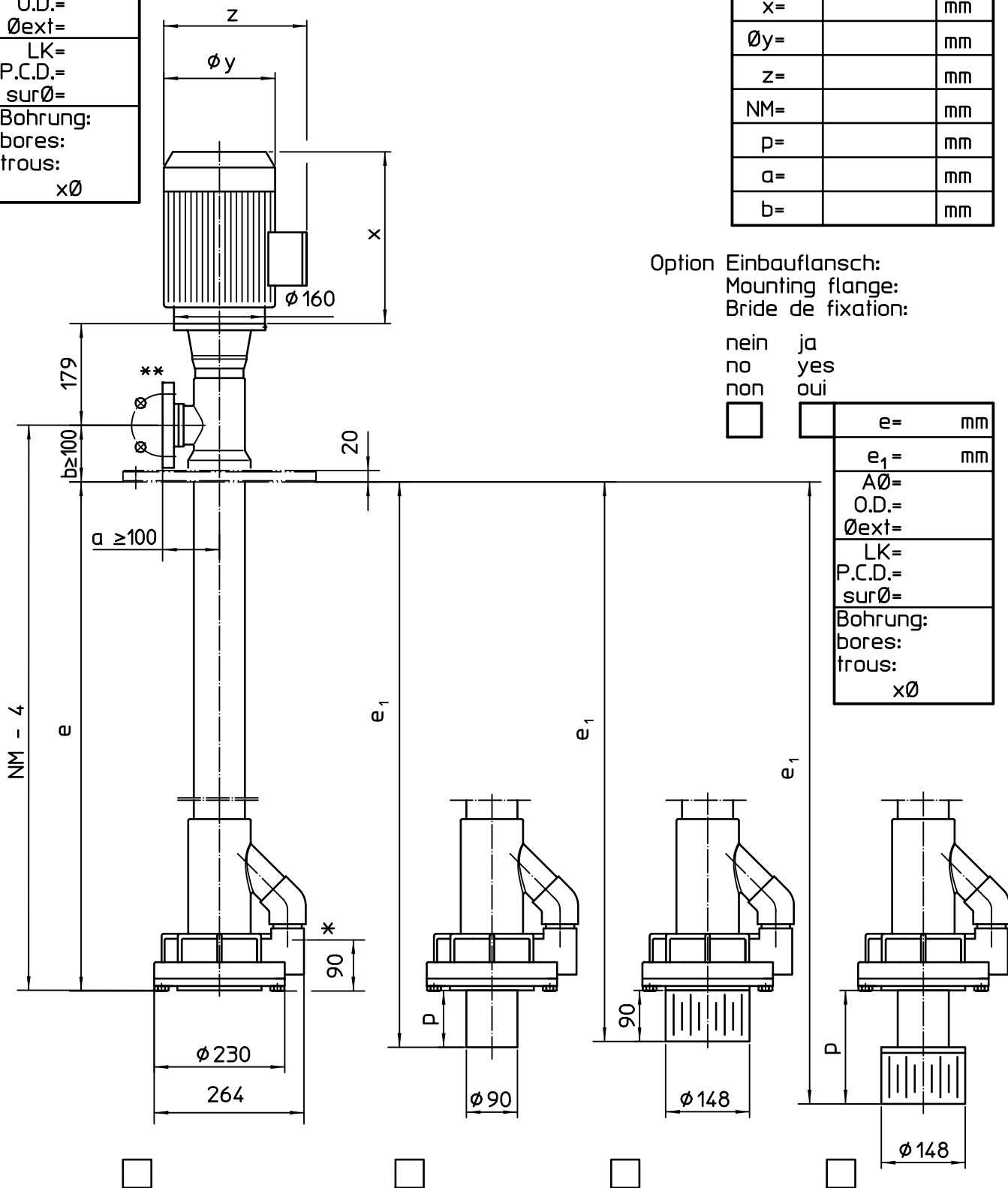


| |
|----------|
| PN= |
| DN= |
| AØ= |
| O.D.= |
| Øext= |
| LK= |
| P.C.D.= |
| surØ= |
| Bohrung: |
| bores: |
| trous: |
| xØ |

** Flanschanschlussmaße nach EN 1092-1
 Flange dimensions according to EN 1092-1
 Dimensions de bride selon EN 1092-1

| | | |
|--------|--|-------------------|
| Motor | | kW |
| Moteur | | |
| n= | | min ⁻¹ |
| x= | | mm |
| Øy= | | mm |
| z= | | mm |
| NM= | | mm |
| p= | | mm |
| a= | | mm |
| b= | | mm |



* minimaler Flüssigkeitsspiegel beim Einschalten
 minimum liquid level when starting the pump
 niveau minimum du liquide à la mise en marche