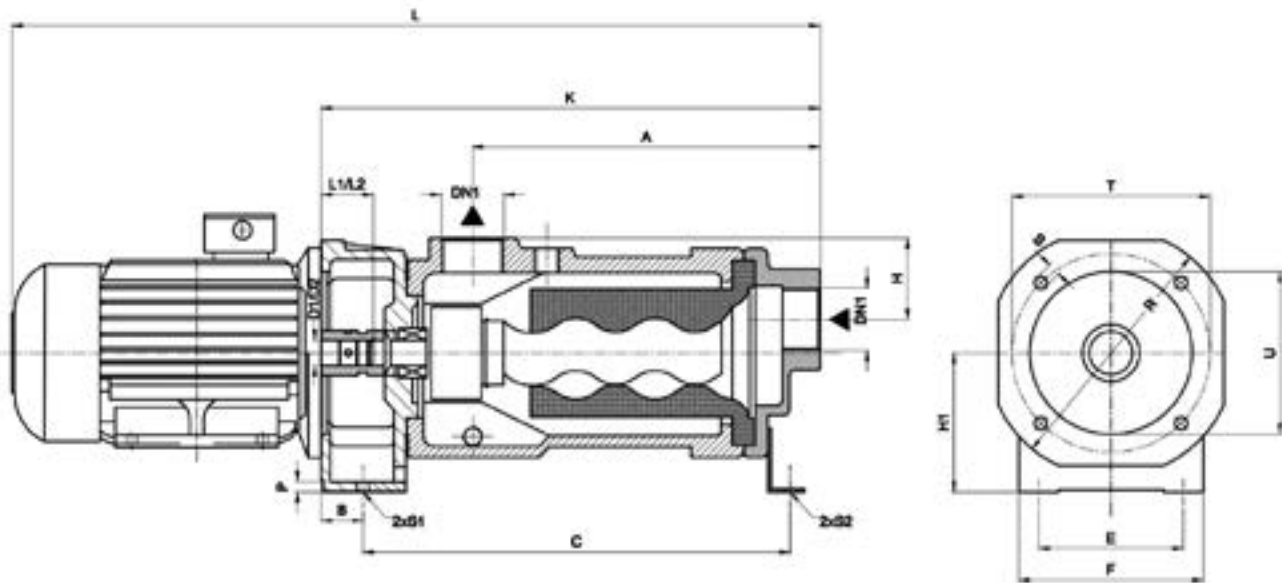


Dimensions

FM Series - Free Moulded Progressive Cavity Pumps



Model	Motor	A	B	C	D1	D2	DN1	E	F	H	H1	K	L	L1	L2	P	R	S	S1	T	J	Kg
036	D71	190	-	-	14	14	G1"F	-	-	44.5	70	255	491	32	-	-	150	9	-	130	110	22
074	D71	190	-	-	14	14	G1"F	-	-	44.5	70	255	491	32	-	-	150	9	-	130	110	22
154	D71	190	-	-	14	14	G1"F	-	-	44.5	70	255	491	32	-	-	150	9	-	130	110	22
253	D71	190	-	-	14	14	G1"F	-	-	44.5	70	255	491	32	-	-	150	9	-	130	110	22
254	D80/90	248	35	330	19	24	G1 1/2"F	118	150	61	105	368	654	47	52	10	200	11	11	165	130	39
354	D80/90	248	35	330	19	24	G1"F	118	150	61	105	368	679	47	52	10	200	11	11	165	130	42
504	D80/90	286	35	360	19	24	G2"F	118	150	63	105	412	723	47	52	10	200	11	11	165	130	55
604	D80/90	286	35	360	19	24	G2"F	118	150	63	105	412	723	47	52	10	200	11	11	165	130	56
1004	D100/112	286	35	360	24	24	G2"F	160	200	63	130	422	733	-	52	10	200	11	11	165	130	59
1804	D132	557	25	680	28	28	DN80	190	220	170	150	732	1136	-	62	10	250	13	13	215	180	128

1804: Figure shown at C is total length to rear hole centres please deduct 50mm from this figure to find distance to second set of hole in the middle support.

Sizes in mm