

aquaplus

**ISSB Series
Split Case Pump**



ISSB Series Split Case Pump

**2 Year
Warranty!**

www.aquapluspumps.com.au

Features

1. High operating reliability - Thanks to the double-entry impeller (compensating the axial forces) the load on the generously dimensioned, pre-loaded, maintenance-free bearings is minimal.
2. Low maintenance costs - The combination of solid bearing brackets, a short and rigid shaft, and pre-loaded bearings guarantees low vibrations and long operating lives of bearings, seals and coupling. Corrosion and abrasion resistant materials ensure top service lives for shaft protecting sleeves, impeller/casing wear rings, and impeller.
3. Service-friendly design - The self-centring upper part of the casing and the preloaded rotor enable cover and rotor assembly without any adjustments. For maintenance, the cover's hexagon head bolts are completely removed from the casing. The casing split flange can therefore be easily and thoroughly cleaned, and the inside of the pump is freely accessible.

Features (cont.)

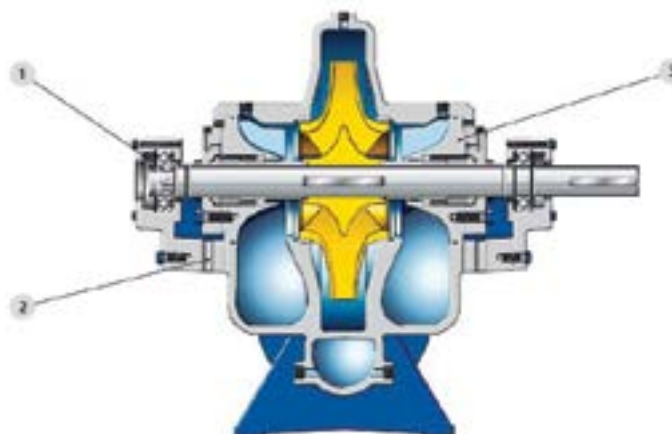
- Reliable sealing - The sold casing split flange at the upper and lower casing part ensures reliable and trouble-free sealing of the upper and lower casing halves.

Applications

For handling pure, raw and waste water as well as seawater in:

- Water works
- Irrigation and drainage pumping stations
- Power stations
- Industrial water supply
- Fire fighting systems
- Marine and offshore engineering
- General applications in the petrochemical industry
- Seawater desalination

Cutaway



Pump Material Options*

Pump Material Options	Material Type
Volute casing	Grey cast iron/ nodular cast iron/ duplex cast steel
Impeller	Bronze/duplex cast steel
Shaft	Cr steel/duplex steel
Shaft protecting sleeves	Cr steel
Casing wear rings	Bronze/Cr steel
Impeller wear rings (optional)	Bronze/duplex steel

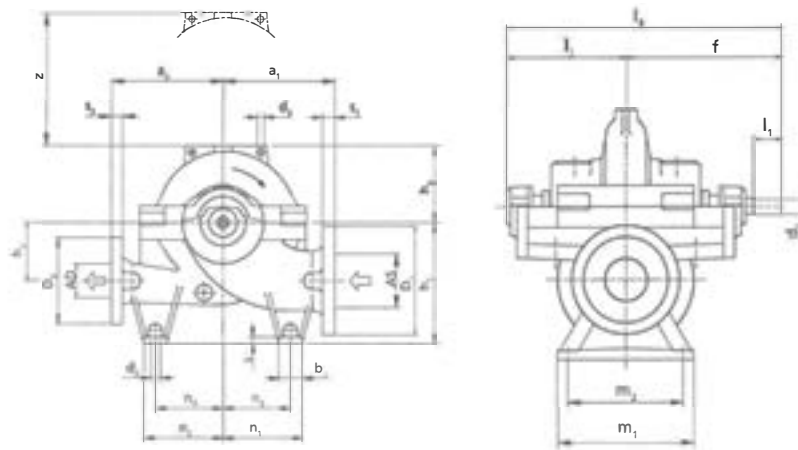
*Other materials on request.

Technical Data

Pump Sizes	DN 80-700	3 to 28 in
Capacity	Up to 10, 000 m ³ /h	Up to 44, 030 gpm
Discharge head	Up to 240 m	Up to 787 ft
Operating pressure	Up to 25 bar	Up to 363 psi
Temperature	Up to 140°C	Up to 284°F

All content is subject to change without notice.

Pump Dimensions



Note: Vertical configuration available on request.

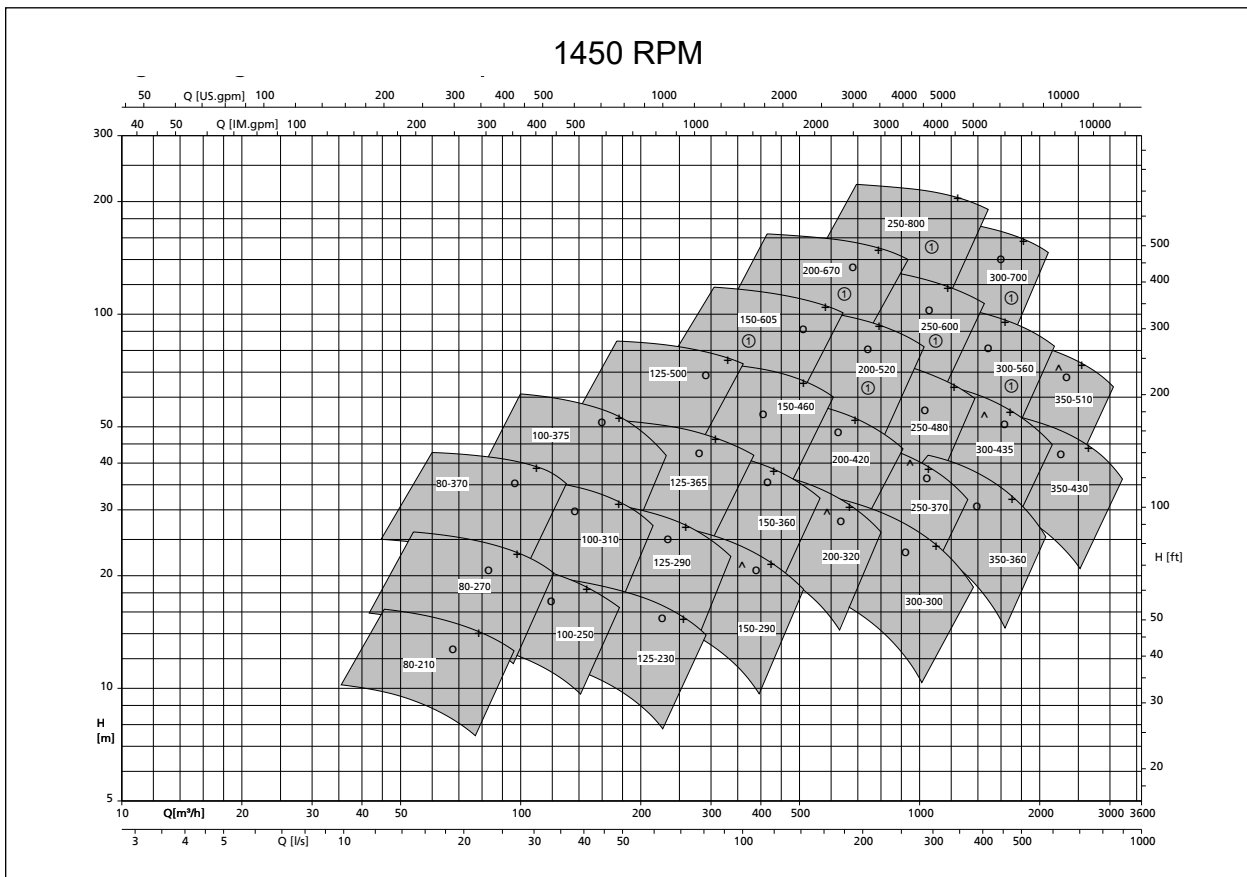
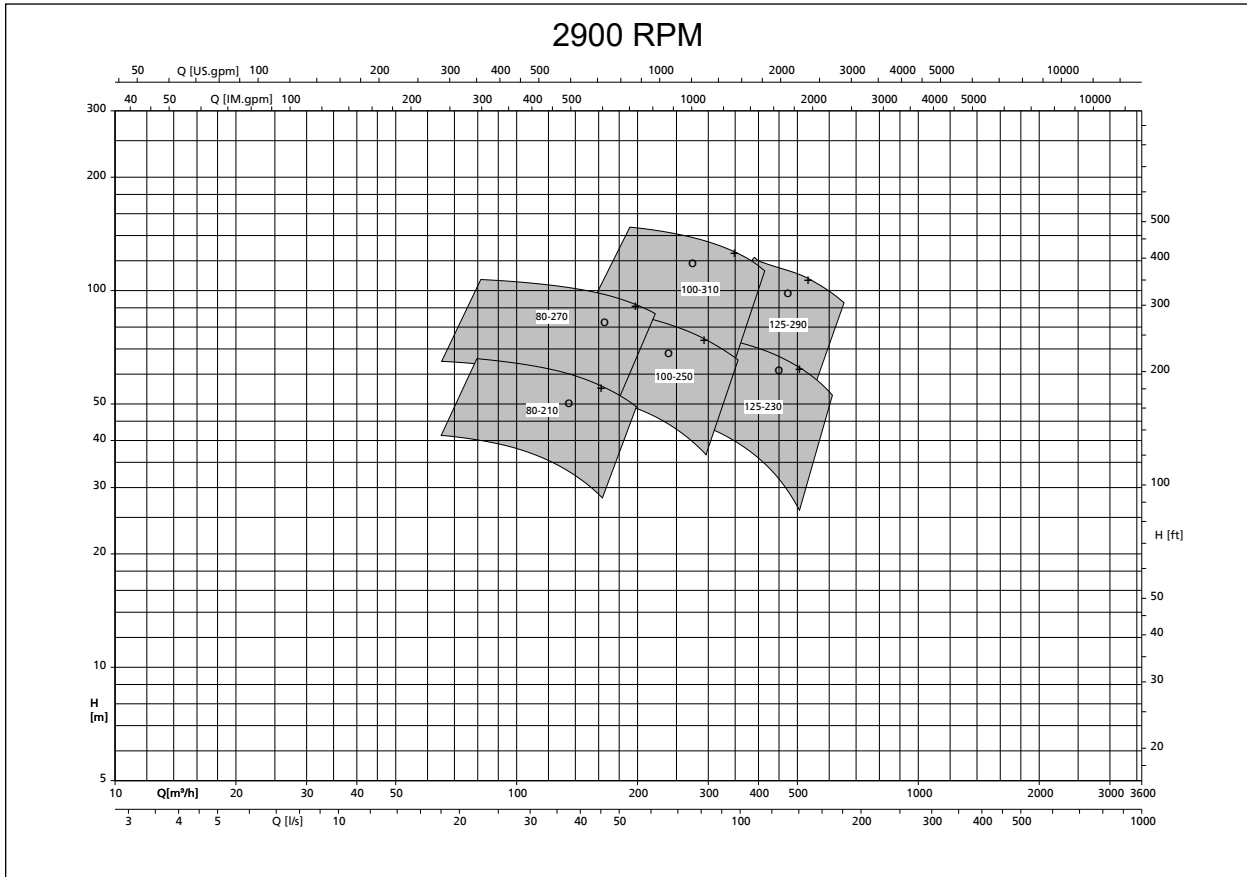
Pump Size (mm)	Pump (mm)										Suction Side	Discharge Side
	a ₁	a ₂	d ₃	f	h ₁	h ₂	h ₃	l ₂	l ₃	z	AS	AD
080-210	300	300	19	415	315	140	168	300	715	340	125	80
080-270	300	300	19	415	315	140	190	300	715	380	125	80
080-370	330	330	19	415	315	140	225	300	715	450	125	80
100-250	330	330	19	415	355	170	195	300	715	390	150	100
100-310	330	330	19	415	355	170	225	300	715	450	150	100
100-375	370	370	19	415	355	170	260	300	715	520	150	100
125-230	370	370	19	515	400	200	210	366	881	420	200	125
125-290	370	370	19	515	400	200	230	366	881	460	200	125
125-365	370	370	19	515	400	200	260	366	881	520	200	125
125-500	450	450	19	515	400	200	305	366	881	610	200	125
150-290	400	400	19	515	400	200	245	366	881	490	200	150
150-360	400	400	19	515	400	200	265	366	881	530	200	150
150-460	450	450	19	590	400	200	305	399	989	610	200	150
150-605	600	500	19	590	500	300	370	399	989	740	200	150
200-320	450	450	24.5	590	500	240	285	399	989	570	250	200
200-420	500	500	24.5	590	500	240	310	399	989	620	250	200
200-520	600	500	24.5	655	560	300	370	464	1119	740	250	200
200-670	650	550	30	655	600	350	430	464	1119	860	250	200
250-370	500	500	24.5	655	600	300	320	464	1119	640	300	250
250-480	550	550	30	730	600	300	355	515	1245	710	300	250
250-600	650	550	30	730	630	350	420	515	1245	840	300	250
250-800	800	700	30	810	710	400	520	585	1395	1040	300	250
300-300	550	500	30	655	630	300	360	464	1119	720	350	300
300-435	650	550	30	730	670	350	365	515	1245	730	400	300
300-560	700	650	30	810	710	350	430	585	1395	860	400	300
300-700	750	650	30	810	750	400	485	585	1395	970	400	300
350-360	650	550	30	730	670	350	410	515	1245	820	400	350
350-430	750	650	30	810	750	400	465	585	1395	930	450	350
350-510	700	650	30	810	750	400	420	585	1395	840	400	350

Foot and Shaft Dimensions

Pump Size (mm)	Foot (mm)									Shaft (mm)		Pump Weight (kg)	
	b ₁	d ₂	m ₁	m ₂	n ₁	n ₂	n ₃	n ₄	s	d ₁	l ₁	Pump	Water fill
080-210	70	19	320	270	205	205	170	170	20	35	80	185	10
080-270	70	19	320	270	205	205	170	170	20	35	80	195	15
080-370	70	19	320	270	205	205	170	170	20	35	80	205	20
100-250	70	19	320	270	235	235	200	200	20	35	80	210	20
100-310	70	19	320	270	235	235	200	200	20	35	80	225	25
100-375	70	19	320	270	235	235	200	200	20	35	80	245	30
125-230	70	19	390	340	260	260	225	225	20	45	100	250	35
125-290	70	19	390	340	260	260	225	225	20	45	100	275	40
125-365	70	19	390	340	260	260	225	225	20	45	100	300	45
125-500	70	19	390	340	315	315	280	280	20	45	100	335	55
150-290	70	19	390	340	260	260	225	225	20	45	100	350	50
150-360	70	19	390	340	260	260	225	225	20	45	100	360	60
150-460	70	19	480	430	315	315	280	280	20	55	125	440	75
150-605	70	19	480	430	385	385	350	350	20	55	125	650	90
200-320	70	19	480	430	315	315	280	280	20	55	125	450	80
200-420	70	19	480	430	315	315	280	280	20	55	125	520	95
200-520	70	23	480	400	385	385	350	350	20	65	140	840	115
200-670	100	23	480	400	400	400	350	350	26	65	140	990	140
250-370	100	23	480	400	400	400	350	350	26	65	140	665	125
250-480	100	23	600	520	400	400	350	350	26	75	160	910	145
250-600	100	23	600	520	400	400	350	350	26	75	160	1215	180
250-800	100	23	600	520	525	525	475	475	26	85	180	1500	150
300-300	100	23	480	400	400	400	350	350	26	65	140	870	150
300-435	100	23	600	520	400	400	350	350	26	75	160	905	190
300-560	100	23	600	520	525	525	475	475	26	85	180	1425	225
300-700	100	23	600	520	525	525	475	475	26	85	180	1690	275
350-360	100	23	600	520	400	400	350	350	26	75	160	1100	230
350-430	100	23	600	520	525	525	475	475	26	85	180	1285	240
350-510	100	23	600	520	525	525	475	475	26	85	180	1395	290

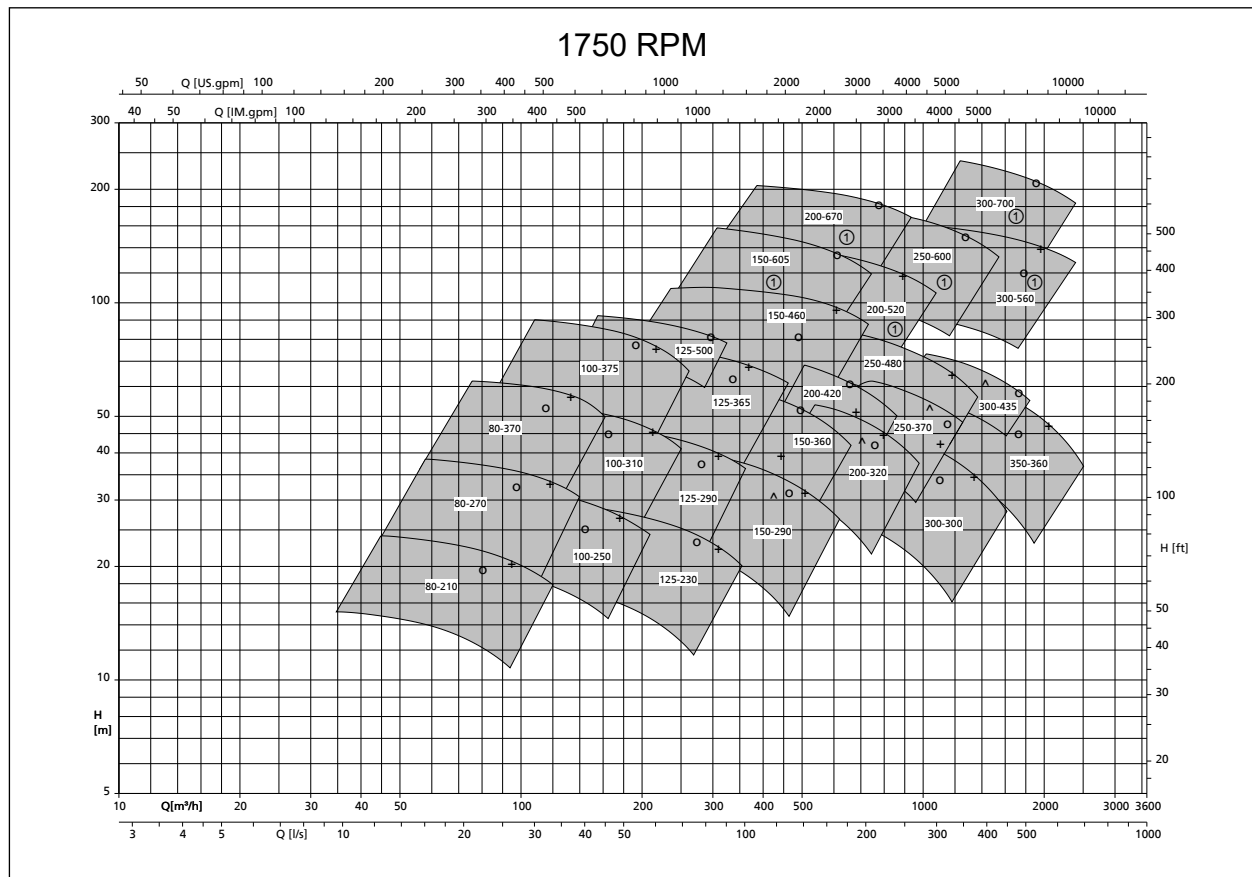
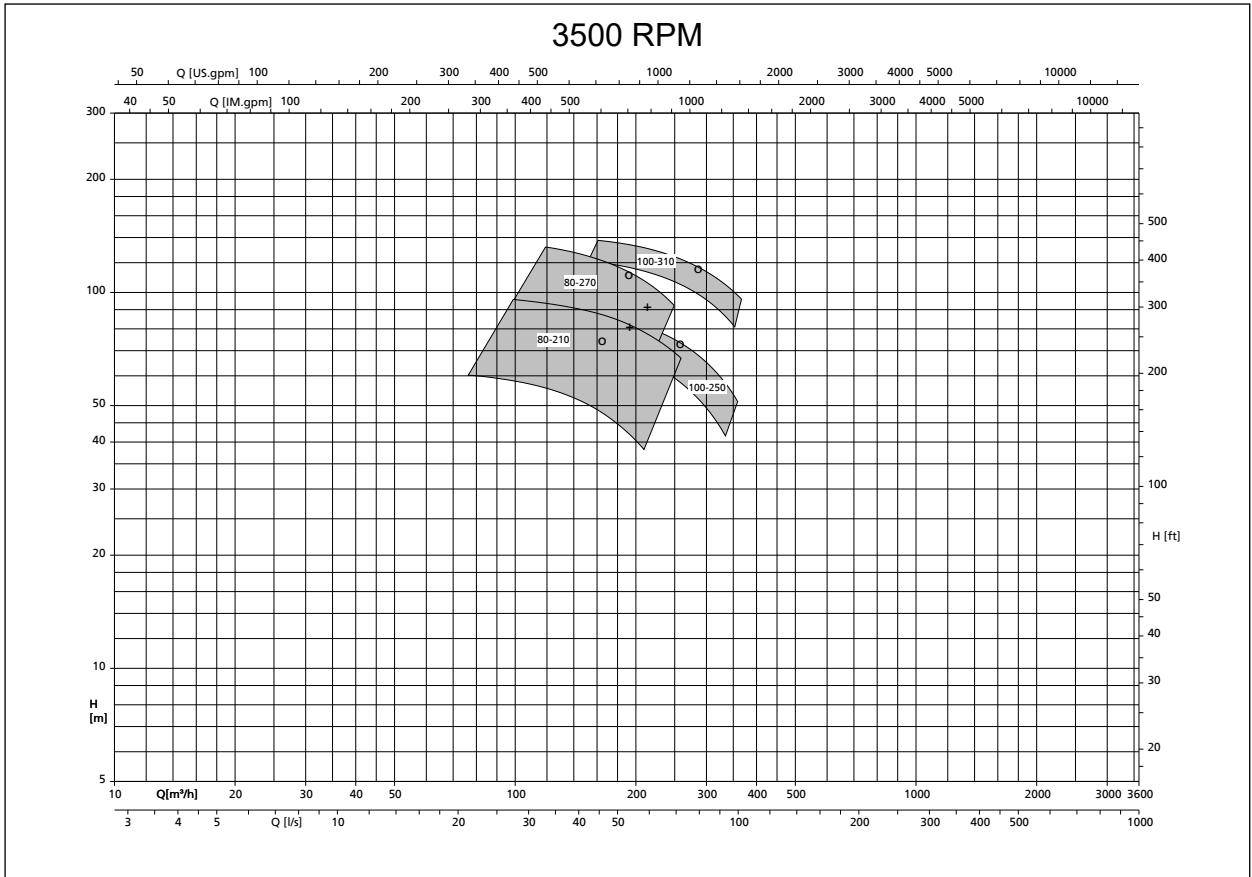
All content is subject to change without notice.

Performance Curves



All content is subject to change without notice.

Performance Curves



All content is subject to change without notice.

Aquaplus Product Range

ESDM Series – End Suction DIN (24255) Pumps

ESI Series – End Suction ISO (2585) Pumps

SP Series – Self Priming Pumps

SD Series – Submersible Dewatering Pumps

AD Series – Air Diaphragm Pumps

MD Series – Magnetic Drive Pumps

FRM Series – Flexible Rising Main (Borehole Pump Hose)

MS Series – Mechanical Seals (Single Spring & Cartridge)

We are also able to provide Progressive Cavity and Peristaltic Pumps.

The logo for Aquaplus, featuring the word "Aquaplus" in a stylized, blue, italicized font with a white outline. The letter 'A' is larger and has a blue swoosh above it.

DISTRIBUTED BY



For information on these products or for any specialised requirements please contact your local Aquaplus distributor or visit our website at www.aquapluspumps.com.au